

The Missouri Engineer

The official publication of the Missouri Society of Professional Engineers, whose mission is to promote the ethical and competent practice of engineering.

A Message From Your 2018-2019 MSPE President

Michael Purol, P.E.



Mother Nature has certainly thrown us a few curve balls this winter. As I write this, we are looking at a forecasted high of (-1) degree in a couple days. Two weeks ago, we elected to hold our winter board meeting via conference call in-lieu of asking 20+ members to drive to Jefferson City amidst winter storm warnings of ice and snow. I would first like to thank our staff and members who gave up a majority of their Saturday to help with the administration of our Society. As you know our Local Chapters, and State Committee's are the heart of our organization.

The Winter Board meeting is an extremely important time in which our Chapter leaders, and Committee Chairs can update the Board of Directors as to the accomplishment, findings, and needs of each component that makes up our Society. While there are several "standard committees" who we are

accustom to hearing from, such as our Membership Committee and Government Relations Committee, this year we heard from a new Committee or Task Force who's primary focus was to review how MSPE was being administered and make recommendation for future administrative needs. This committee was named "Moving MSPE Forward Committee" or "MMFC" for short. This committee was made up of Co-Chairs including current MSPE – VP John Riediger, and Past MSPE President David Howe. The committee was then filled with State Board of Director Members, Breck Washam, Rachel Goeke, and Derek Vap. The committee sent Chapter Presidents, Board Members, and Practice Division Chairs a 20-question survey, as well as personal conversations with several members of our Society. Survey responses were then compiled, and the results were shared with the full Board of Directors.

After a detailed report of the committee's findings by David Howe, Past MSPE President, the committee recommended to the Board of Directors that the Executive Committee (EC) begin negotiations with BHL for administrative services for the 2019-2020 fiscal year. A motion was then made, seconded and approved for EC to begin this work. A working meeting of the

EC has been scheduled with hopes of having a negotiated contract ready for the Board of Directors review by the end of March 2019.

Another important decision made by the Board of Directors involved our MSPE Logo. You may remember discussion of this in our last publication of the Missouri Engineer (ME). After months of conversation throughout the Society, the board voted to move forward with the new NSPE-MO logo, providing a consistent message with our partner societies throughout the Nation. The revised logo provides specific State and Chapter logos designed for digital media. As chapters ramp up for Engineers Week, please look for these updated logo's and reach out to staff if you need the logo for new chapter material.

In closing I would like to thank our Chapter, Committee's, Volunteers, and Staff for all of their hard work this year. Keep June 17 – 19 on your Calendars for our Annual Convention at the Lake of the Ozarks, I guarantee warmer weather! The following month NSPE will hold its Annual Convention in Kansas City. If you have never been to a NSPE Convention, now is the time, we would love to see you there!

-Michael Purol, P.E., MSPE President

"My formal education, along with continued education has given me the technical skills required for my career. However, MSPE has given me the opportunity to improve my soft-skills including leadership skills, which has helped advance my career."

-Michael Purol P.E., MSPE President, 2018-2019

Inside the Issue

State News

Welcome New Members!	3
Sustaining Organizations	4
MSPE Foundation Building for Rent	4
Executive Director Message Travis Lowe	5
Special Membership Meeting March 2	6
Government Relations Committee Recently Formed	6
Legislative Days at the Capitol March 27	7
MSPE Board Adopts New Logos	8
Board Meeting Recap January 19	9
Practice Division Updates September 14	10-11
MSPE Social Media Stats	10
2019 MSPE Annual Convention June 17-19	12
MSPE Convention Sponsorships	13-14
PE Certificate Ceremony March 8	15
Fall PDH Days Recap By Stacey Meyer	16
Voluntary Life Contributions	17
Member Spotlight Brandon Parrish, P.E.	18
State MATHCOUNTS Competition March 2, 2019	19

NSPE News

NSPE 2019 Annual Conference July 17-21, 2019	22
National Engineers Week February 17-23, 2019	22
NSPE North Central Director Message By Matt Kruse, P.E.	23
Britt Smith on NSPE COPA Committee	24
MSPE ED on NSPE Committee	24
NSPE Membership Task Force Formed Purol and Lowe Appointed	24



Chapter News

Calendar of Events	26
Chapter MATHCOUNTS Events	26-29
Discover Engineering Day Ozark Chapter, February 16	30-31
National Engineers Week St. Louis Chapter	32
Ozark Chapter Thank You	33
Chapter Meetings/Events	34-36

Advertisements

Professional Card Listings	37-38
-----------------------------------	--------------

Left: The MSPE St. Louis Chapter received a promotion as the grant money from the estate last year, used as part of a bigger project at the Missouri State Division of Youth Services project to have a greater impact.

Editor's Message: Please enjoy the 2019 Winter Issue of the Missouri Engineer. If you have any engineering-related photos from your work that you may like to see featured in future editions of the ME, please send them to rninceheler@mspe.org. Thank you, and enjoy your read!
-Rachel Ninceheler, Editor, Director of Communications

The Missouri Engineer is published semi-monthly by the Missouri Society of Engineers, 200 E. McCarty St., Suite 200, Jefferson City, MO 65101. Subscription fees are \$1 per year to MSPE members and \$12 per year to non-members. Opinions expressed by authors herein are not necessarily those of the Society. As a matter of policy, MSPE does not endorse any item, product or advertisement.

Correspondence regarding advertising, articles and changes of address should be mailed to:

The Missouri Engineer
c/o Rachel Ninceheler, Editor
200 E. McCarty Street, Suite 200
Jefferson City, MO 65101
Phone: 573-636-4861
Fax: 573-636-5475
www.mspe.org

NSPE-MO[®]

MISSOURI SOCIETY OF
PROFESSIONAL
ENGINEERS

Welcome New Members!

Central Chapter

Karla Bier, P.E.
Gates Corporation
Columbia, MO

Northeast Chapter

Heather Schebel, P.E.
Schebel Environmental
West Des Moines, IA

Ozark Chapter

Stuart Cunningham, P.E.
Toth & Associates, Inc.
Springfield, MO

Cameron Sooy, E.I.

*Enterprise Firm
MoDOT SW District
Springfield, MO

Anthony Wellnitz, E.I.

*Enterprise Firm
A2V Partners LLC
Springfield, MO

Lewis Wiles, P.E.

Toth & Associates, LLC
Springfield, MO

St. Louis Chapter

Thomas Creamer Jr., P.E.
Aegion
Chesterfield, MO

Justin Decker, P.E.*

McCarthy Building
Companies
Chesterfield, MO

Lisa Douglas, P.E.

Ace Pipe Cleaning, Inc.
St. Louis, MO

Matthew Hafner, P.E.

AMEREN
Maryland Heights, MO

Denise Hervey, P.E.

TSi Geotechnical
St. Louis, MO



David Lewis, P.E.

Zoltek
St. Louis, MO

Carol Onest, P.E.

Govero Land Services
Imperial, MO

Stephen Rau, P.E.

Anheuser-Busch
St. Louis, MO

Siavash Zamiran, P.E.

Marino Engineering
Associates, Inc.
Richmind Heights, MO

Southeast Chapter

Donna Petrich, P.E.

MoDOT
Sikeston, MO

Jessie Philpot, P.E.*

MoDOT
Sikeston, MO

Southwest Chapter

Mark Cochran, E.I.

*Enterprise Firm
Allgeier Martin & Associates,
Inc.
Joplin, MO

Mark Gordin, P.E.

Innovative Project Solutions
Nixa, MO

Alex McChristian, E.I.

Liberty Utilities
Joplin, MO

Miles Robinson, E.I.

*Enterprise Firm
Allgeier Martin & Associates,
Inc.
Joplin, MO

Phillip Shimp, P.E.*

Diamond, MO

Western Chapter

Richard Byrne, P.E.*

RPByrne consulting Inc.
Kansas City, MO

James Kinder, P.E.*

HNTB Corporation
Kansas City, MO

Edward Szczuka, P.E.*

Federal Aviation
Administration
Kansas City, MO

Andrew Walker, P.E.

NISTAC-Federal Contractor
Kansas City, MO

***Indicates Rejoins**

Sustaining Organizations

Sustaining Organizations offer your firm:

- *The ability to demonstrate its interest in professional engineering.*
- *An open line of communication with engineering interests throughout Missouri.*
- *Clear indication of your support of the P.E. license and the Missouri Society of Professional Engineers.*
- *The ability to partner with MSPE to maintain and expand a high level of programs and activities for the benefit of both organizations and its individuals.*

MSPE's Sustaining Organization firms:

A2V Partners, LLC
Springfield, MO

ABNA Engineering, Inc.
St. Louis, MO

Allgeier, Martin & Associates
Joplin, MO

Allstate Consultants LLC
Columbia, MO

Ameren
St. Louis, MO

American Concrete Paving Association
Overland Park, KS

Anderson Engineering, Inc.
Springfield, MO

Black & Veatch
Kansas City and St. Louis, MO

Burns & McDonnell, Inc.
Kansas City and St. Louis, MO

Cook, Flatt & Strobel, Engineers, P.A.
Topeka, KS

Gaskin Hill Norcross, Inc.
Springfield, MO

George Butler Associates, Inc.
Lenexa, KS

Gibbens Drake Scott, Inc.
Raytown, MO

Gredell Engineering Resources, Inc.
Jefferson City, MO

HNTB Corporation
Kansas City, MO

Holmes Murphy
Overland Park, KS

Horner & Shifrin, Inc.
St. Louis, MO

Kuhlmann design Group
St. Louis, MO

Lockton Companies
Kansas City, MO

McClure Engineering Co.
Iowa and Missouri offices

Palmerton & Parrish, Inc.
Springfield, MO

Scurlock Industries
Springfield, MO

Strickland Engineering
Jackson, MO

The Piker-Kulesa Group & RBC Wealth Management
Leawood, KS

Walter P. Moore and Associates, Inc.
Kansas City, MO

MSPE Foundation Space for Rent

The MSPE Foundation's building has office space for rent!

Approximately 3,000 square feet of downtown Jefferson City office space is available. Convenient access to the Capitol with parking space available.

Currently configured for 5+ individual offices plus a large conference room. Lease rates to be negotiated based on length of contract.

For more information, see the Craigslist listing at <https://columbiamo.craigslist.org/off/d/jefferson-city-jefferson-city-office/6774928953.html>

or contact Greg Braden at gbraden@mspe.org or 785-615-1609.



Executive Director Message

By Travis Lowe

MSPE Members,

Happy New Year! We hope this publication finds you well. It is our pleasure to serve as your staff. We are excited to produce another record-size publication highlighting MSPE news on multiple fronts. We have many updates to share, but first we want to thank you for your continued support of MSPE that comes in so many ways.

As a new year rolls in, MSPE is hitting the ground running. The 2019 Legislative Session is underway in Jefferson City. MSPE is ensuring we are growing your voice in the State Capitol. We are proud to announce Mark Rhoads is representing MSPE as our contract lobbyist. Mark is our boots on the ground every day carrying our flag as he meets with state legislators on our issues. A new Government Relations Committee has been formed to provide input to Mark on a regular basis as we review new introduced legislation and amendments. MSPE firmly believes in having a strong advocacy arm as we represent you and protect your interests. We want to remind our members that every state's rules and regulations that impact your practice takes place in your capitol building. Let's let them know MSPE is here, and we have over 1,000 members that make us strong. To that end, we are planning a 2019 PE Day to take place on March 27. Please see the

details in this publication and plan to attend. It will be a great chance to come to the Capitol, represent your interests and learn about the process while you are here.

We just wrapped up a successful Fall PDH Days event in Jefferson City that was held on December 12-13. We received a lot of positive feedback from attendees as they earned a full year's worth of continuing education. A big thanks goes out to the Fall PDH Days Committee, speakers and MSPE Staff Members, Alison and Stacey, for pulling off a great event.

We are now looking ahead to the MSPE 2019 Annual Convention that is set for June 17-19 at Lake of the Ozarks. MSPE staff is working with the 2019 Conference Planning Committee to finalize the agenda and is making great progress. Online and mail registration will open on April 1. Full conference registration was reduced 25% compared to last year! This is just one of the changes we made to accommodate membership feedback to make the event more affordable and attractive to a broad base of attendees. The event will also no longer conflict with Father's Day and is now two-and-a-half days instead of three-and-a-half. Please consider being a sponsor of the event. It all adds up and we will make sure sponsors received plenty of exposure for their generosity.



We hope you are finding it easier to stay in touch on MSPE news. Our new website adds new information as soon as it becomes available. All MSPE social media platforms are growing in "followers" and "likes."

Other upcoming events include the semi-annual license ceremony and E-Week. These are both events that help showcase our industry.

We have a lot of committees working right now to improve specific functions of the association. We are grateful to all of these volunteers who spend time and resources working for the betterment of our society.

If you have any ideas, questions or constructive feedback, don't hesitate to reach out to us.

-Executive Director Travis Lowe

Connect With Us on Social Media!

"Like"



Missouri Society of Professional Engineers
Facebook Page

"Follow"



@theMOengineer
Twitter Page

"Follow"



@theMOengineer
Instagram Page

"Connect"



MSPE-Missouri Society of Professional Engineers
LinkedIn Page

Official Notice

Special MSPE Membership Meeting Scheduled for March 2, 2019 at the MSPE Office to Vote on Proposed Bylaw Amendments

JEFFERSON CITY - MSPE President Michael Purol has announced a special membership meeting will be held on March 2 for the sole purpose of considering proposed by-law amendments. This is the rescheduled meeting for the one postponed in January for inclement weather.

Over the last several months, the MSPE Bylaws Committee, crafted amendments to the existing society bylaws to comply with revisions to the NSPE Bylaws in the Spring of 2018. The new membership model became effective on July 1, 2018. MSPE contractually became an integrated society at that time. Revisions in the bylaws are required to ensure consistent policy between the MSPE bylaws and the NSPE Bylaws.

Per Article XVII of the bylaws, the MSPE Board of Directors can approve amendments to "administrative" sections of the bylaws. The MSPE Bylaws require the Membership approve Amendments to sections labeled "governance". On October 12, the MSPE Board of Directors approved the "administrative" changes. During the same meeting, the Board of Directors approved holding a special membership meeting for the purpose of the membership voting on the "governance" amendments. This action satisfies the MSPE Article IV, Section 2 Bylaw requirement to call a special membership meeting.

This notice is to comply with Article XVII, Section 2, providing thirty days-notice via electronic communication to the voting membership. During

this meeting, the proposed amendments may be approved by a two-thirds vote of the voting members in attendance. A quorum is defined as being at least one voting member present from at least two-thirds of the chapters.

A vote in favor approves the proposed changes. A vote against disapproves the proposed changes. Please click here for proposed bylaws.

[Please click here for proposed bylaws.](#)

**Meeting details are as follows:
MSPE Special Membership Meeting
Saturday, March 2, 2019
9:30 AM - MSPE Office
Jefferson City, MO**

MSPE Forms Government Relations Committee

A new committee has been formed to help lead MSPE's advocacy efforts during the 2019 legislative session. The MSPE Government Relations Committee, referred to as the GRC, held its first meeting in December with MSPE contract lobbyist Mark Rhoads.

The committee will meet regularly over the course of the session to review legislative bills of interest to determine, if and/or what level, MSPE should engage on the issue. Because MSPE represents all Licensed Professional Engineers, the committee is populated with a broad base of disciplines to capture a wide array of

prospective. In many cases, proposed legislation may mean more or less to specific segments of the membership. MSPE Immediate Past President Ron Black is chairing the committee.

"This is an important task," MSPE Executive Director Travis Lowe stated during the first committee meeting. "Advocacy may be the number one reason Licensed Professional Engineers should be members of MSPE. We have a lot of issues in the Capitol that can impact our membership and MSPE needs to be ready. There is a saying, "if you are not at the table, you are on the menu.""

The committee roster is as follows:

Chairman: Ron Black, P.E., PMP, Electrical Engineer

John Briggs, P.E., Civil Engineer

Anika Careaga, P.E., CPESC, Environmental Engineer

Timothy M. Quinn, P.E., Mechanical Engineer

Gary Strack, P.E., Civil Engineer

Stacey R. Meyer, MSPE Director of Membership

Travis Lowe, MSPE Executive Director

Mark Rhoads, MSPE Contract Lobbyist

Mercury Alliance Legislative Days

Mercury Alliance's Upcoming Events in the State Capitol

Event: Mercury Alliance Legislative Day

Date: Wednesday, January 30, 2019
Wednesday, February 13
Wednesday, March 27 (Held with MSPE Capitol Day)
Tuesday, April 16
Tuesday, May 14

Time: Orientation begins at 9:15 a.m. at AGC of Missouri Jefferson City Office

Location: AGC of Missouri Jefferson City Office (1221 Jefferson Street) & Missouri State Capitol

During the 2019 legislative session, the Mercury Alliance will hold five legislative days in the Missouri Capitol. Each of these legislative days will begin with a brief orientation at the AGC of Missouri Jefferson City Office, followed by visits to lawmakers in the Capitol.

During orientation, attendees will receive a brief update on the latest legislative efforts to address transportation funding as well as materials to share with their elected officials. Meetings with various

legislative leaders will be pre-scheduled during each legislative day. In addition to these pre-scheduled meetings, attendees will be encouraged to visit with their own representatives and senators to express the need for increased transportation investment.

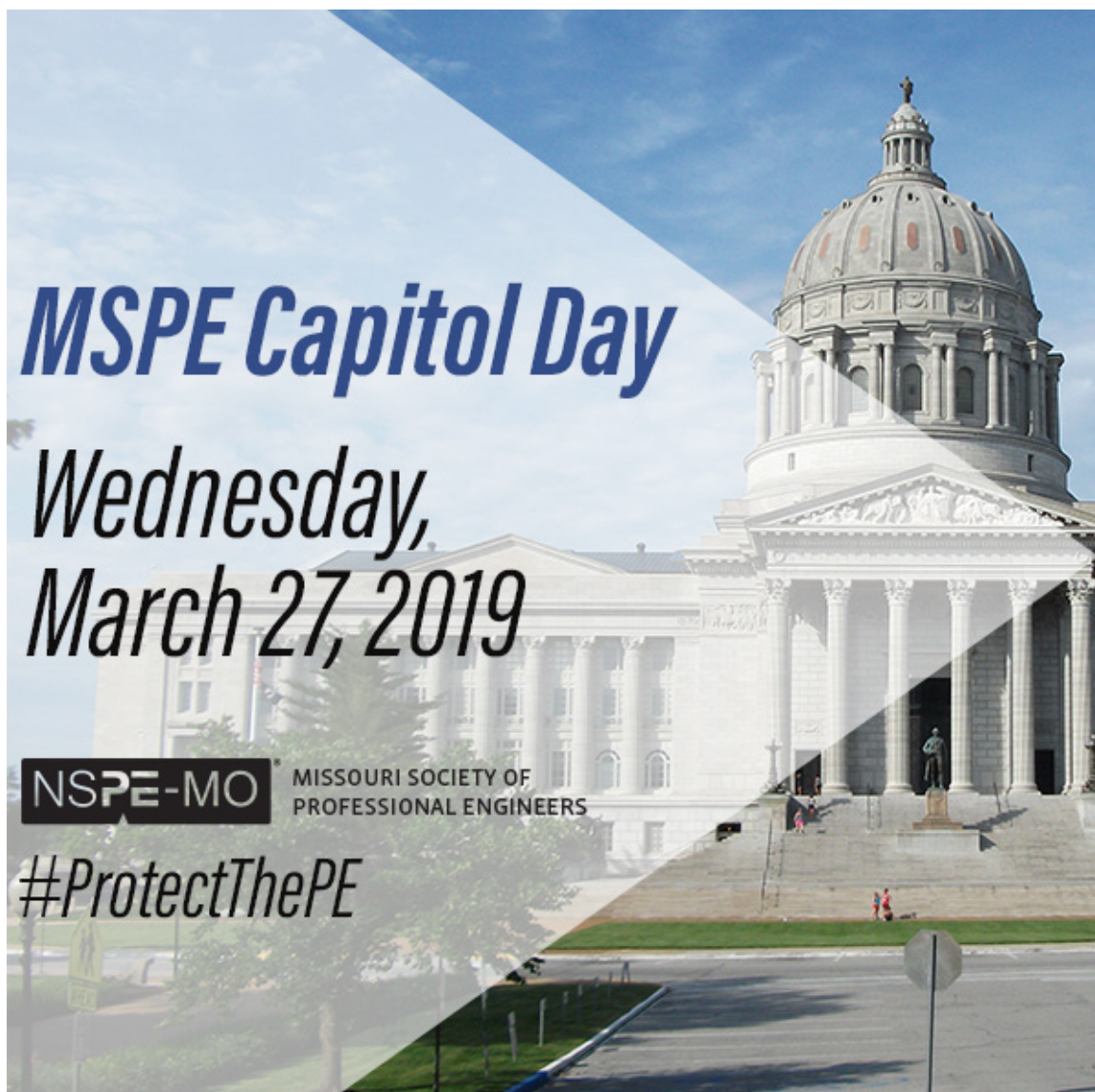
There is no fee to attend these sessions, however registration is required in order to ensure an adequate supply of materials.

To register for the Legislative

Days, email the names of your attendees and the organizations they represent to:
info@mercuryalliance.org

Registration links for these dates will be sent in future legislative updates.

Following the defeat of Proposition D, we must demonstrate our continued resolve toward enacting a transportation investment solution.



MSPE Board Adopts New MSPE Logo

Jefferson City - The Missouri Society of Professional Engineers is featuring a new logo. During the January Board of Directors meeting, directors voted to adopt the new logo that makes MSPE more consistent with counterpart societies. Different formats for the state logo and chapters have been provided by NSPE. Each chapter present has received files for their logo in vertical and horizontal formats; blue, black and white versions, and with transparent backgrounds.

According to NSPE, 40 of the 48 state and territorial integrated societies have adopted the new NSPE state logo. MSPE now becomes the 41st.



MISSOURI SOCIETY OF
PROFESSIONAL
ENGINEERS



MISSOURI SOCIETY OF
PROFESSIONAL ENGINEERS



MISSOURI SOCIETY OF
PROFESSIONAL
ENGINEERS



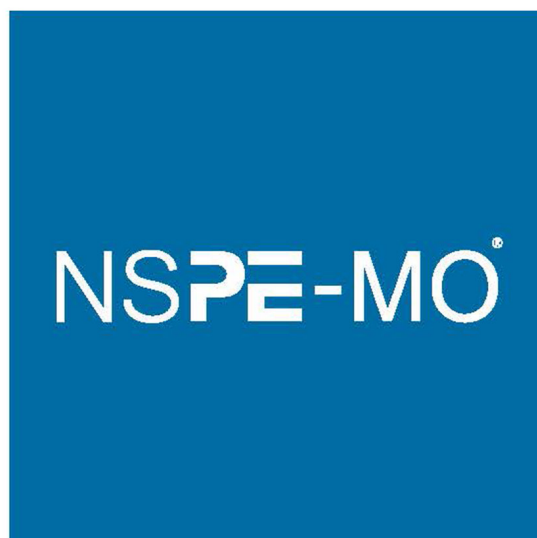
MISSOURI SOCIETY OF
PROFESSIONAL ENGINEERS



MISSOURI SOCIETY OF
PROFESSIONAL
ENGINEERS



MISSOURI SOCIETY OF
PROFESSIONAL ENGINEERS



Board Meeting Recap

January 19, 2019

The MSPE Winter Board of Directors meeting fell victim to inclement weather, forcing directors to meet via teleconference to ensure members safety. Directors handled usual housekeeping, included but not limited to, committee reports, staff reports, and reviewing financials. A handful of larger discussions, such as recommendations from the Moving Missouri Forward Committee and consideration of the proposed MSPE logo change highlighted the meeting news.

David Howe, who serves as co-chair of the Moving Missouri Forward Committee provided a thorough update on the committee's deliberations on the new staff model implemented by MSPE in July 2018.

The committee also reviewed the scope of services and performance provided by Braden Heidner Lowe & Associates (BHL) and sent surveys



to forty MSPE state and chapter leaders on each single scope function. Mr. Howe reported the results yielded a consistent response stating BHL has met or exceeded expectation on their scope. The committee recommended the Executive Committee negotiate a twelve-month extension with BHL, which was approved by the Board of Directors without dissent.

The MSPE Board of Directors considered implementation of the new MSPE logo provided by NSPE for the state and chapters. Examples of logos were published in the fall issue of the Missouri

Engineer. On a 15-4 roll call vote, the logo was adopted. MSPE becomes the 41st of the 48 integrated societies to adopt the new logo.

During the meeting, President Purol announced plans for a new Bylaws Committee to tackle a group of new issues. Other highlights were provided on the new Government Relations Committee, Membership Committee, IT Task Force, Financial Audit Committee and 2019 Annual Meeting Planning Committee and NSPE news.

The Educational Foundation Board of Directors discuss building needs and tenant solicitation and the new Kimel Committee.

MSPE Practice Divison Updates

Professional Engineers in Private Practice (PEPP)

By Tim Quinn, P.E.

I hope you had a great holiday season and are starting the new year off right. The progress made at the December 2018 PEPP Board meeting put us in a great position for 2019. The PEPP Board is well ahead of schedule in selecting the 2019 NSPE Fellow nominee and PEPP Distinguished Service, Professional Development, and the Quality Based Selection (QBS) award winners. In addition, we have already started the process to identify the next PEPP Board member as Immediate Past Chairman, Clayton Cristy P.E. (Olsson Associates) rounds out his last year on the PEPP Board.

Although the awards progress and a fresh face on the PEPP Board are good news, I am most excited to share the PEPP Initiative discussion to date. The PEPP Board has had great discussions on professional engineering licensure and

liability and decided that our 2018-2019 initiative will be to share some insight on a range of related topics. These topics include, but are not limited to, the industrial exemption in Missouri, sealing work, protecting your seal, professional liability, and corporate/personal insurance. The manner in which we will deliver our initiative message has yet to be decided, but we have a few ideas.

The PEPP Board rounded out our discussion in the December meeting with a 2018-2019 budget review and planning for the 2019-2020 budget. I am pleased to report that we are under budget to date and should be able to support the PEPP Initiatives well.

One final thought: The Missouri Department of Conversation (MDC) was the PEPP QBS Award winner at the 2018 Annual Convention. This year,



at PDH Days, Jacob Careaga, P.E. with MDC presented about the QBS process. Sincere thanks from the PEPP Board to Jacob Careaga, P.E. and MDC for paying it forward. Have great first quarter and don't forget to support your local and the state Mathcounts events.

Sincerely,
Tim Quinn, P.E.

MSPE Social Media Statistics



January 2019 Statistics

Posts: 25
Page Views: 91 (up 139%)
Post Reach: 1,541 (up 236%)
Page Reach: 1,707 (Up 1,200)
Post Engagements: 813 (Up 674%)
New Page Likes: 8 (Up 167%)
Total Page Likes: 215

Missouri Society of Professional Engineers
Facebook Analytics show dramatic increases in statistics in the last 28 days.



January 2019 Statistics

Visitors: 19 (Up 72%)
Impressions: 335 (Up 857%)
Followers: 2 (Up 100%)
Total Followers: 61

MSPE-Missouri Society of Professional Engineers
MSPE's LinkedIn page has also seen increased engagement in the last 30 days.



January 2019 Statistics

Tweets: 16 (up 300%)
Tweet impressions: 4,201 (up 143.2%)
Profile Visits: 117 (up 33%)
Followers: 84 (Up 7)

@theMOengineer
In January 2019 alone, MSPE's Twitter account had large increases in statistics.



January 2019 Statistics

Posts: 14 pictures
Likes: 58
Reach: 413
Impressions: 642

@theMOengineer
In the last 30 days, MSPE's Instagram has reached many, especially with the help of Facebook.

MSPE Practice Divison Updates

Professional Engineers in Government (PEG)

By Eric Seaman, P.E.

PEG is seeking to profile engineers who have made the jump from engineers to managers of entire Cities.

Ron Urton, P.E. had a background in professional practice as a consulting engineer. In 2016, he tackled not only Trenton's City

Administration but also serves as Director of Municipal Utilities (Power, Water and Wastewater Services). He took time out of a busy winter to provide some insight into technical professionals becoming managers.



What experience or qualities as a professional engineer aid you in being an effective City Administrator?

Ron Urton: My engineering background has definitely helped with the Utility Director portion of my new job. Especially the water and wastewater portions. My engineering background has helped on the City Administrator side since it has given me experience working with city councils, planning and organizing projects, especially in the areas of streets and storm drainage.

How does an organization like Missouri Society for Professional Engineers help the engineer/manager?

Ron Urton: I think MSPE helps because we learn about what regulations or funding opportunities are coming down from the state and federal levels.

What advice would you give engineers who are considering moving toward management?

Ron Urton: Advice I have given young engineers: I would recommend getting a BS in engineering and then get an MBA or a management degree. Based on my experience, it seems like engineers move into management/business arenas as their career progresses.



Ron Urton

MSPE Educational Foundation *Methods of Contributing*

Consider contributing to the MSPE Educational Foundation by using your Required Minimum Distribution (RMD) from your IRA. To reference a sample letter for RMDs go to mspe.org/Educational-Foundation



NSPE-MO

MISSOURI SOCIETY OF
PROFESSIONAL ENGINEERS

MSPE Annual Convention

DATE JUNE 17-19, 2019

VENUE CAMDEN ON THE LAKE
LAKE OF THE OZARKS

\$151 PLUS TAX ROOM RATE

DISCOUNT THROUGH MAY 17

USE CODE: [MSPE0619](#)

COST 25% REDUCTION IN FULL
REGISTRATION COST!

\$399 FULL CONFERENCE

\$100 MONDAY ONLY

\$200 FULL CONFERENCE SPOUSE

\$125 KIDS FULL CONFERENCE

**NOT
TO
GO**

REGISTRATION OPENS APRIL 1

MSPE 2019 Annual Convention

\$500+

PDH SPONSOR

PDH SPONSOR

INCLUDES

- Limited to one (1) Sponsor for each dual track PDH session and two (2) Sponsors for each single track session.
- Choice of specific PDH Session is in a first come, first-serve basis.
- Recognition on MSPE website
- Recognition in Convention Brochure

\$1,000+

SILVER SPONSOR

SILVER SPONSOR

INCLUDES

- One (1) Engineer Registration (Full)
- Recognition on Registration Website
- Convention Registration Table Display

\$2,000+

GOLD SPONSOR

GOLD SPONSOR

INCLUDES

- Two (2) Engineer Registrations (Full)
- Sponsorship of One (1) Selected PDH Session
- Recognition on the MSPE Website
- Convention Registration Table Display
- Recognition in Convention Brochure

\$2,500+

PLATINUM SPONSOR

PLATINUM SPONSOR

INCLUDES

- Two (2) Engineer Registrations (Full)
- Sponsorship of One (1) Selected PDH Session
- Recognition on the MSPE Website
- Convention Registration Table Display
- Recognition in Convention Brochure

CONTACT ALISON CONNELL AT aconnell@mspe.org OR GO TO www.mspe.org FOR MORE INFORMATION

Other Sponsorships

\$350

FRIEND

FRIENDS OF MSPE

INCLUDES

- Recognition in Convention Brochure
- Recognition on MSPE's Website

\$750

PDH BREAK SPONSOR

PDH BREAK SPONSOR

INCLUDES

- Limited to one (1) Sponsor per break
- Exclusive signage at the break table
 - First come, first serve!
- Recognition on MSPE Website
- Recognition in Convention Brochure

\$1,000

OPENING RECEPTION SPONSOR

OPENING RECEPTION SPONSOR

INCLUDES

- Signage at Reception
- Recognition on MSPE Website
- Recognition in Convention Brochure
- Limited to Two (2) sponsors

\$1,500

ANNUAL BANQUET SPONSOR

ANNUAL BANQUET SPONSOR

INCLUDES

- Signage at Banquet
- Reserved seating at Banquet
- Exclusive signage at President's Reception
- Recognition on MSPE Website
- Recognition in Convention Brochure
- Limited to Two (2) sponsors

\$1,250

LUNCH SPONSOR

LUNCH SPONSOR

INCLUDES

- Signage at Both Lunches
- Recognition on MSPE Website
- Recognition in Convention Brochure
- Limited to four (4) sponsors

CONTACT ALISON CONNELL AT aconnell@mspe.org OR GO TO www.mspe.org FOR MORE INFORMATION

Save the Date

Spring P.E. Certificate Ceremony

Recognizing Missouri's Newly Registered
Professional Engineers

1:00 p.m., Friday, March 8, 2019
Capitol Rotunda, Jefferson City, MO



**Keynote Speaker:
Lieutenant Governor
Mike Kehoe**

For more information, see www.mspe.org or contact MSPE
Membership Coordinator Stacey Meyer at smeyer@mspe.org.



obtained as a result of the investigation of the complaint shall be considered a closed record of the Board and shall not be available for inspection by the public.

During the investigation, the Board and its executive staff shall keep the complaint and the fact of its existence confidential to the extent practicable.

Fall PDH Days Recap

By Stacey Meyer

Participation at MSPE's annual two-day professional development event, held Wednesday and Thursday, December 12 and 13, 2018 at the Capitol Plaza Hotel in Jefferson City was near the identical attendance to last year's event.

Fall PDH Days provides an opportunity for MSPE members and non-members to receive up to 15 PDHs – the equivalent of one-year's worth of continuing competency hours needed to meet Missouri's P.E. licensure renewal requirements.

Attendees commented the Fall PDH experience provides a good value for their investment with programs that address current issues in the engineering profession and networking opportunities with their peers.

This year's PDH Day's featured fourteen speakers and different programs. Sessions focused on: Dynamic Communications for the Dynamically Challenged, Environmental Regulatory Overview, Rails to Trails Bridge Projects, USACE Waters of the United States and Mitigation,

MO Dept. of Conservation, QBS Selection of Engineering Firms, Rock Island Trail Presentation, NSPE – Threats to Licensure, Remote Flow Monitoring for Storm and Sanitary, Autonomous Vehicles, Helical Piles for Transmission Tower and Substation Structures, NCEES Exam Creation Process, Ethics Presentations, and LED Lighting.

Plans are currently underway to return the 16th Annual Fall PDH Days to the Capitol Plaza Hotel in December 2019.

"Feedback from the event was extremely positive. MSPE thanks all the attendees, speakers and supporters that made the event a resounding success. Director of Events Alison Connell and Director of Membership Stacey Meyer executed the event."
-Travis Lowe, Executive Director

A big thank you goes to the Fall PDH Days Planning Committee, which met several times over the last several months. The committee roster is as follows:

CHAIR:
John Riediger, P.E.

MEMBERS:
Kelsie Clark, P.E.
Anika Careaga, P.E., CPESC
Mitch Gibler, E.I.
Matt Weber, P.E.
Michael Purol, P.E.
Alison Connell, Director of Events



DYNAMIC COMMUNICATIONS FOR THE DYNAMICALLY CHALLENGED

MSPE Voluntary Life Contributions 2018

Every year MSPE's Life Members receive a letter highlighting the previous year's activities and outlining MSPE's President's objectives for their administrative year. The Annual Life Member correspondence (per the society's bylaws) also requests continued support of MSPE's mission through a voluntary contribution. Without fail, the response from the society's Life Members is prompt and generous.

The Annual Life Member letter also presents an opportunity to provide updates to personal information. Any life member who needs or wants to update their member information is encouraged to contact Membership Director Stacey Meyer by phone at 573-636-4861 or via email to smeyer@mspe.org.

Below are the names of Life Members making generous contributions. On behalf of a grateful membership and MSPE's professional staff, our sincere thanks is extended to the following members, listed by chapter, for their continued support and generosity.

Charles Buescher, P.E.	Chesterfield, MO
Anthony Bonderer, P.E.	Fulton, MO
Thomas Holt, P.E.	Jefferson City, MO
J.D. Steele, P.E.	Lee's Summit, MO
James Odom, P.E.	Hallsville, MO
Richard Astrack, P.E.	St. Louis, MO
Charles Gillespie, P.E.	St. Louis, MO
Gerald Hitt, P.E.	Jackson, MO
Arthur Wernle, P.E.	Chesterfield, MO
Joseph Gudiswitz, P.E.	St. Louis, MO
James Guthrie, P.E.	Prairie Village, KS
George Satterlee, P.E.	Overland Park, KS
Harold McCoy, P.E.	Joplin, MO
Chris Wilson, P.E.	Kansas City, MO
Robert Egbert, P.E.	Springfield, MO
Edwin Rackers, P.E.	Jefferson City, MO
Rodd Staker, P.E.	Kansas City, MO
John Krall, P.E.	Liberty, MO
Frank Shores, P.E.	St. Joseph, MO
Charles Stieffermann, P.E.	Bonnotts Mill, MO
William Clarke, P.E.	St. Louis, MO
Rex Finley, P.E.	Springfield, MO
Charles Payer Jr., P.E.	Chesterfield, MO

Thank you!

USDA Rural Development Water and Waste Water Conference

The USDA Rural Development Water and Waste Water Conference on November 15, 2018 in Columbia, Missouri had a huge attendance of MSPE members. Those members who attended included the names listed below:

Mark Bross	Klingner & Associates, P.C.
Chris Erisman	Allgeier, Martin and Associates, Inc.
Quentin Gehring	Poepping, Stone, Bach, & Associates, Inc.
Josh Hartsock	Klingner & Associates, P.C.
Joe Heberlie	Missouri Engineering Company
Don Jenkins	MECO Engineering
Ross Kasman	Engineering Surveys & Services
Bart Korman	Lewis-Bade, Inc.
Darren Krehbiel	Darren Krehbiel Consultants
Stacey Meyer	MO Society of Professional Engineers
Andrew Novinger	Anderson Engineering, Inc.
Kyle Pociask	Four Points Land Surveying, Inc.
Michael Purol	Poepping, Stone, Bach, & Associates, Inc.
Cary Sayre	Allstate Consultants, LLC
Byron Shaw	MECO Engineering
Matthew Suhadolc	Klingner & Associates, P.C.
Scott Vogler	MECO Engineering



Member Spotlight

Brandon Parrish, P.E.

Chapter: Ozark

Education: Willard High School, Willard, MO, University of Missouri-Columbia (BS in Civil Engineering), University of Missouri-Columbia (MS in Civil Engineering/Geotechnical Engineering Emphasis).

What is your employment/education history? Graduate Research/Teaching Assistant - Mizzou (2005-2006); Staff Engineer - Palmerton & Parrish, Inc. (2006-2013) – Springfield, MO; Vice President – Palmerton & Parrish, Inc. (2013-present) – Springfield, MO.

Tell us about your family: I have been married to my wife Erin for 11 years. I have known her most of my life, but we did not start dating until graduate school. We (she) always joke, that was probably for the best. We have two children, Zeke (7) and Hazen (5). No matter what it is, we like to do things all together.

What is your greatest accomplishment to date? It sounds strange, but I don't believe I can take credit for any single accomplishment in my life. Every significant and defining time and moment in my life has been shaped, fostered and enabled by my wife, friends and family. I have been and am blessed to have many people in my life to share wins and defeats with, as cliché as it sounds. So if I had to pick

one great thing that we have accomplished it would be balancing the everyday of mine and my wife's career while raising our children the best we know how while still enjoying the ride.

One fun fact about you: In college I got the opportunity to spend several weeks in Europe with Dutch foreign exchange students who previously came to our high school, including the Netherlands, Belgium, Germany and France. We then got to snowboard for a week in the French Alps at Val Thorens. I hope to someday take the trip again with my family.

What do you like to do with your free time? Be with my family, which typically involves anything active, outside, or both. Our family likes to play just about all sports, go snowboarding, running/weightlifting, work outside, or simply go walking/hiking in the woods. I am also involved in coaching my children's sports teams. Our family also attends and serves at Northside Christian Church in Springfield, MO.

Why did you become an engineer? The fear of failing organic chemistry. Not really, but it had a part. Growing up, my father was and still is an engineer and a consulting engineering business owner. That's all I really knew. However, when I started college my first declared major was Biomedical Science. When I heard the folklore surrounding organic



chemistry (looking back it was probably untrue) the semester before I was set to register, I started looking into other avenues, which led me to what I grew up with, engineering. I of course, had a natural role model and mentor, with my father. So undoubtedly, my father is the real answer to the question of why I became an engineer.

If you weren't an engineer, you would be a: That's a tough question, but I like to think I would be something in the medical field associated with anesthesia, sports medicine or children.

Favorites...

Restaurant: Whichever one my wife wants (I'm not a big food person).

Vacation spot: Rocky Mountains, typically Keystone, Colorado.

Sports team: Denver Broncos, St. Louis Cardinals

Song or Music Artist: No one particular song/artist, but my favorite radio station is BXR 102.3 (Columbia).



MSPE Missouri State Competition

When: Saturday, March 2, 2019
8:00 AM - 3:00 PM

Where: Missouri University of Science and Technology
Butler-Carlton Hall, Rolla, Missouri

Program: Butler-Carlton Hall is located southwest of Pine Street and 16th Street in Rolla, Missouri.
Parking is available for free.

Volunteers are needed for grading exams scoring exams, and proctoring. Breakfast and lunch will be provided for volunteers.

Volunteers for the State MATHCOUNTS

Competition should contact Josh Lehmen at jlehmen@ess-inc.com or (573) 694-2919

Please specify what time you will be able to volunteer and if you would like to proctor, grade, or enter scores.

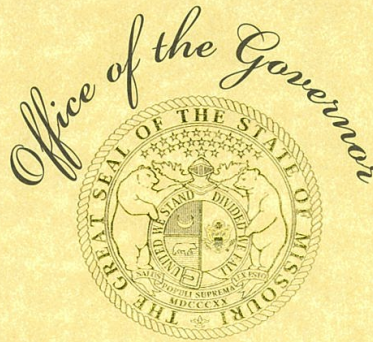
Additional information will be sent out closer to the competition.

Grading will be performed in Rooms 215 & 216

Registration:	Atrium/Entrance	8:00 - 9:00
Welcome:	Auditorium (125)	9:00 - 9:15
Sprint Round (No Calculators):	Auditorium (125)	9:20 - 10:10
Informal Coaches Meeting:	Room 120	9:30 - 10:00
Refreshment Break:	Atrium/Entrance	10:10 - 10:30
Target Round (Calculators Allowed):	Auditorium (125)	10:30 - 11:10
Team Round (Calculators Allowed):	Rooms 314, 315, 316, 317, and 318	11:30 - 11:55
Lunch (Provided for Volunteers):	Rooms 215 & 216	11:55 - 1:20
Countdown Round:	Auditorium (125)	1:20 - approx. 2:15
Awards Ceremony:	Auditorium (125)	2:15 - 2:30
Meeting with Missouri State Team:	Room 124	2:30 - 3:00

Governor Parson Signs Engineers Week Proclamation

February 17 - 23, 2019



State of Missouri Governor's Proclamation

WHEREAS, the growth of modern civilization and its development to the present have been achieved through the knowledge and efforts of many groups and professions, but none has contributed more to this progress than the engineering profession; and

WHEREAS, engineering has been and continues to be a vital factor in the development of industrial machines, beautiful cities, transportation and communications systems, public health systems, and an essential factor in solving our energy needs; and

WHEREAS, it is desirable that all segments of the American community become informed of the contributions of the engineering profession in order to better understand the interrelation of the various professions, sciences, arts, and trades, and also in order to encourage young people to train for engineering careers; and

WHEREAS, it is fitting and proper that due recognition be given to the men and women of the engineering profession who, through their pioneering efforts, have brought these many benefits to our American way of life.

NOW THEREFORE, I, Michael L. Parson, GOVERNOR OF THE STATE OF MISSOURI, do hereby proclaim February 17-23, 2019, to be

ENGINEERS WEEK

IN TESTIMONY WHEREOF, I have hereunto set my hand and caused to be affixed the Great Seal of the State of Missouri, in the City of Jefferson, this 4th day of January, 2019.



Handwritten signature of Michael L. Parson in blue ink.

Michael L. Parson
GOVERNOR

ATTEST:

Handwritten signature of Jay Ashcraft in blue ink.

Jay Ashcraft
SECRETARY OF STATE

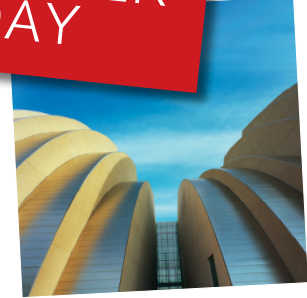
NSPE NEWS



Upcoming Events from NSPE

#PECON19

REGISTER TODAY



PROFESSIONAL
ENGINEERS
CONFERENCE

JULY 17-21, 2019
KANSAS CITY
MARRIOTT DOWNTOWN

register today >> www.nspe.org/pe-conference

DISCOVER



ENGINEERS WEEK

FEBRUARY 17-23, 2019



NSPE North Central Director Message

By Matt Kruse, P.E.

Hello again fellow NSPE members and colleagues, I hope everyone had a great holiday season and was able to spend some time with family and friends in a relaxed setting. Now that the New Year has started it seems like things are back to the usual fast pace within the engineering community. I wanted to give you a brief update from NSPE on what has been taking place in the North Central Region. Again, maybe for new members or maybe not everyone is familiar with the formal organization of NSPE, the North Central Region of NSPE is made up of North Dakota, South Dakota, Minnesota, Nebraska, Iowa, Kansas, and Missouri. The director of a region serves as a representative for two way communication between the chapter and state societies within NSPE and the Executive Board of NSPE.

In my last update, I introduced briefly the new strategic planning effort that NSPE began after the last annual meeting in Las Vegas. A significant amount of time and effort has been dedicated to this planning effort at both the national level and the state level. Several conference calls have taken place between the steering committees and the strategic plan groups, the facilitator for the planning effort hired by NSPE has sat in on at least one conference call with each region within NSPE and along with executive board members, and the facilitator has conducted several one on one interviews with executive directors and state leaders

throughout the country. The next major step in the process is an in-person meeting in March of this year with NSPE and NICET strategic planning committee members. One item of note regarding the process is that Travis Lowe, the Executive Director for the state societies of both Kansas and Missouri, recently agreed to join the steering committee and help with the planning effort. As for reference, the current main focus of the strategic planning effort is concentrated on the following areas: Shaping of Public Policy, Educating for the Future, Communicating Powerfully to Critical Audiences, Diversity of Tomorrow's Engineer, and Engaging the State Societies and NICET. If you have any comments or concerns that we have captured the key areas or we have missed something we want to hear from you. Please feel free to contact me regarding the strategic plan as we want to hear from you.

As a region, we hold a conference call each month with state leaders from within our region where we discuss pertinent items to each state. With the start of the new year, also comes the start of new state legislative sessions. A reoccurring theme that has been becoming more prominent within the country is reevaluating licensure or attacks on the professional licensure. NSPE representatives at both the national level and state level continue to monitor new legislation as it is introduced and help to protect the interest of the engineering



profession. Please be on the lookout if they ask for your assistance with any legislative items. Also, a quick reminder that NSPE adopted a new membership model last year and the renewals and new member applications should be done through the NSPE national website. If you haven't received a renewal form or you are having a problem renewing or signing up a new member, please reach out to me or your state leader.

It is hard to believe that next month is the beginning of this year's MATHCOUNTS competition. If you have the time, please think about volunteering at your chapter or state level. This is a great event to get in front of young students and continue to grow their interests in math and science and the program really can't continue to succeed without willing volunteers. If you have any questions or comments regarding NSPE, please feel free to reach out to me at 402-496-2498 or matt.kruse@LRA-Inc.com.

-Matt Kruse, P.E.,
NSPE North Central Region
Director

MSPE's Britt Smith Appointed to NSPE COPA Committee

MSPE Past President Britt Smith, P.E., F.NSPE is giving Missouri a voice on the powerful NSPE Committee on Policy and Advocacy (COPA). Smith joins as a member representative of the 17-member committee comprised of members, board representatives and staff.

COPA furthers the mission of NSPE through strategic policy development, thereby shaping NSPE's advocacy endeavors. Specifically, the group will develop positions on public policy issues that affect public health, safety and welfare as it relates to the professional practice of engineering and

engineering licensure. NSPE Past President Dan Wittliff, P.E., F.NSPE chairs the committee.

After his appointment Mr. Smith gave the following response: "The profession has given so much to me and my family. When I was approached about joining COPA, I saw it as a way I could give back to the profession. COPA charge is to help develop and clearly articulate the Society's position on various topics such as energy policy, education, licensure, etc. The broad nature of the committee makes it very interesting. In my short time with the group I've found it also requires a steep learning curve."



MSPE Executive Director on NSPE Committee

MSPE's Travis Lowe Appointed to NSPE Strategic Planning Steering Committee

National Society of Professional Engineers President Michael Aitken has announced Travis Lowe as the newest member of the NSPE Strategic Planning Steering Committee. Lowe, who serves as Executive Director for the Missouri Society of Professional Engineers and Kansas Society of Professional Engineers, joins five other members that represent NSPE's three core constituencies.

NSPE President-elect David Martini, NSPE Vice President Trish Hatley, Rick Guerra, NICET Past President Thomas

Frericks and Leanne Panduren round out the committee roster. The committee has already started its work and meet regularly via conference call. In-person meetings will take place later this year in Tampa, Florida and Alexandria, Virginia.

The NSPE Board, Strategic Plan Steering Committee, and NSPE staff are working with renowned strategic consultant Seth Kahan on maximizing value generation and growth for all three core constituencies that make up NSPE's ecosystem:

- NSPE members, and potential members;
- NSPE State Societies; and
- NICET certificates, their employers, and potential certification services customers.

The strategic planning process will move NSPE forward on the path to success through the implementation of the new membership business model and by clearly defining what is a value, what is the priority, what is the message, and how do we grow.

This strategic plan will be presented to the NSPE House of Delegates in July 2019.

NSPE Membership Model Implementation Task Force Formed MSPE's Purol and Lowe Appointed

The National Society of Professional Engineers has announced the creation of the 2018-2019 NSPE Membership Model Implementation Task Force. This task force succeeds the NSPE Membership Model Transition Task Force, which concluded its work last year. MSPE President Michael Purol and MSPE Executive

Director Travis Lowe, who served on the Transition Task Force, have been appointed to the new Implementation Task Force.

The new Task Force started in December 2018 and is intended to further the mission of NSPE by increasing effectiveness, unity and inclusiveness of efforts

by national and state leaders (volunteer and staff) in achieving the goals of the new membership business model: to offer a compelling value proposition for integrated membership, expand membership at all levels and support the revenue needs of national and its State Societies.

NSPE Past President Kodi Jean Verhalen, P.E., F.NSPE, Esq., serves as the Chairperson of the Task Force.

CHAPTER NEWS



Calendar of Events

February 17-23
E-Week

March 2
State
MATHCOUNTS
Competition

June 17-19
MSPE
Annual
Convention

March 2
Special
Membership
Meeting

March 27
MSPE
Capitol
Day

July 17-21
NSPE
Annual
Conference

Southeast Chapter



When: Friday, February 15, 2019
8:00 AM - 12:00 PM

Where: Cape Girardeau Career and Technology Center
1080 S. Silver Springs Road,
Cape Girardeau, MO 63703

Program: Team check-in starts at 8:00 AM and competition starts at 9:00AM. The competition completes around noon.

Contact Kevin McMeel, PE, for further information at ktmlcmeel@yahoo.com.



68th National Engineers Week Reception and Awards Program

When: Friday, February 15, 2019 - 6:30 - 8:30 PM

Where: The Engineering Center, 4356 Lindell Blvd,
St. Louis, MO 63108

Program: 6:30 PM Networking
7:00 PM Dinner
7:30 PM Program Begins

2019 Awards will be given for the categories listed below:

Outstanding PE in Government
Outstanding PE in Industry
Outstanding PE in Construction
Outstanding PE in Education
Outstanding PE in Private Practice
Engineer of the Year

MSPE Western Chapter/KSPE Eastern Chapter

Co-Sponsors Cordially Invite You and Your Firm to Join Us at the

68th Annual Engineers Week Celebration

Date: Thursday, February 21, 2019

Where: Downtown Marriott Muehlebach Tower
Imperial/Colonial Ballroom
200 W 12th Street, Kansas City, MO 64105

Times: 10:00 AM Booth set-up
10:30 AM Exhibits open and networking
11:30 AM Luncheon
12:00 PM Awards
12:30 PM Presentation

**Parking: Barney Allis Plaza Central Garage or Marriott Hotel Parking
(Bring parking ticket for reduced fee voucher). Please car pool where possible.**

Luncheon contact: Kyle Roberts, P.E., MSPE Representative, eweek@mspe-wc.org, 816-823-7035

Southwest Chapter



When: Saturday, February 16, 2019
8:00 AM - 12:30 PM

Where: Missouri Southern State University
Billingsly Student Center, Room 335

Program: For more than 30 years MATHCOUNTS has provided enriching, extracurricular opportunities to students and free, high-quality resources to educators. Every child is unique, but we believe all children are capable of seeing the beauty and joy of math, whether they come to us already passionate about math, or intimidated by it.

Registered Schools: *Lamar Middle School, Marionville Middle School, Monett Middle School, Nevada Middle School, Streeter Home School, Thomas Jefferson School*
For more information contact Jason Osiek at jason.osiek@libertyutilities.com

Ozark Chapter



When: Saturday, February 2, 2019
7:30 AM - 12:30 PM

Where: Drury University
Springfield, Missouri

Program: Middle school Mathletes from Ozark-area Missouri schools will compete in the local MSPE-Ozark Chapter contest of the national MATHCOUNTS program. MATHCOUNTS is a nationwide program designed to improve math skills among U.S. students. Sponsors, including MSPE, help encourage middle school students, who are at a crucial stage in developing and sustaining math interest and ability.

Additional details or volunteer questions can be directed to Jerry Jesky at jjesky@olsson.com

Jefferson City Chapter



When: Saturday, February 9, 2019
8:30 AM - 12:30 PM

Where: Immaculate Conception School
1208 E. McCarty Street, Jefferson City

Program: Registration will begin at 8:30 am, the competition will start at 9:00 am, and we expect events to be completed by 12:30 pm. Lunch will be provided after the competition. Volunteers are needed for proctoring, grading (answers provided), lunch, setup, and cleanup.

Contact Matt Weber if you are interested in volunteering or for further information at mweber@jeffcity.mo.org or 573-634-6392.

Northwest Chapter



When: Saturday, February 2, 2019

Where: Missouri Western State University

Program: **VOLUNTEERS NEEDED**
Northwest Chapter needs graders (9:30-noon) and proctors (8:30 - 11:30) Please let John Modlin know if you can assist and your t-shirt size.

Additional details or volunteer questions can be directed to John Modlin, Project Manager, KCPL Environmental Engineering, p: 816-640-3865, m: 816-261-8481

Discover Engineering Day

The Ozark Chapter Will Host “Discover Engineering Day” at Missouri State University

February 16, 2019, 12:00 - 3:00 PM

MSU Center 406 N. Boonville

The Missouri Society of Professional Engineers (MSPE) Ozarks Chapter is excited to announce Discover Engineering Day this year at The Plaster Center for Free Enterprise and Business Development (406 N. Boonville, downtown Springfield). The Plaster Center is the newly renovated home of the Missouri State University (MSU) Cooperative Engineering Program. Discover Engineering Day is hosted by MSPE every February during engineers week as an educational outreach event for elementary school-aged children. A recent paper in the Journal of Engineering Education found that only 6% of 1st through 5th graders understood engineers to be people who design. About half think we drive trains. To dispel this misunderstanding,

Discover Engineering Day features interactive and informative activities geared toward elementary school-aged children that are conducted by members of the local engineering community. This new location allows the use of engineering labs, classrooms, and common space. Last year's event was a major success with 300 – 400 visitors and nearly 30 activities.

Please consider participating in this fun event. It is free to all with no RSVP needed. If you would like to help or have questions, please contact the event coordinator Matthew Pierson at (417) 837-2320 (office), (785) 393-2427 (mobile), or MatthewPierson@MissouriState.edu



The Ozark Chapter Will Host “Discover Engineering Day” at Missouri State University, Cont.

Discover Engineering Day

Saturday, February 16th 2019

TIME: 12:00-3:00pm (visit at your leisure during this time)

COST: FREE TO ALL, no RSVP required.

INFORMATION: Every year in February the Missouri Society of Professional Engineers (MSPE) hosts a “Discover Engineering” event targeted to elementary-aged students and people elementary-aged at heart. The event has many different activities and demonstrations that show different aspects of engineering.

LOCATION: The Plaster Center for Free Enterprise, downtown Springfield (PARKING AT 406 N. Boonville Ave.)

PARKING: In the parking lot on the east side of Boonville and Mill Street intersection.

CONTACT: If you have questions or are interested in having a display or activity contact: Matthew Pierson (417) 837-2320 or matthewpierson@missouristate.edu

NSPE-MO[®] OZARK CHAPTER
MISSOURI SOCIETY OF
PROFESSIONAL ENGINEERS



DISCOVER



ENGINEERS WEEK

FEBRUARY 17–23, 2019

National Engineers Week with St. Louis Chapter SciFest Engineering Expo at Saint Louis Science Center

It is time to gear up for the SciFest Engineering Expo at the Saint Louis Science Center (www.slsc.org/event/scifest-engineers-week-expo/2019-02-23/) in celebration of National Engineers Week (EWeek). This is an annual event that educates people about the diversity and importance of engineering by increasing understanding of and interest in engineering and technology careers.

More information about EWeek is available at www.discovere.org. The MSPE St. Louis Chapter is again coordinating this event with the Saint Louis Science Center and we are inviting you to participate as an Exhibitor to help promote the engineering field through an educational activity or presentation that focuses on engineering. The event is scheduled for Saturday, February 23, 2019 from 9:30 a.m. to 4:30 p.m. and Sunday, February 24, 2019 from 11:00 a.m. to 4:30 p.m. as a finale to EWeek.

Register as an Exhibitor for the SciFest Engineering Expo by following this link: <https://goo.gl/forms/vepankvqUxa9E8z1>. Please don't hesitate to contact me if you have any questions or require additional information.

In previous years, organizations such as AABE, ASCE, ASPE, Baxter-HTE Technologies, Boeing, Bricks 4 Kidz, Construction Forum Education Foundation, Engineering Center of St. Louis, Essex, FIRST Robotics, FLL, FTC, GBS, Geotechnology, IEEE, IMEG, Junior Code Academy and GlobalHack, Lil Monster Trucks, Maryville Science and Robotics Program, Missouri S&T, Mizzou, NSBE, NSS Saint Louis Space Frontier & Cyan React, Power Engineers, Ranken Technical College, ROBOMO, SAME, SHPE, SIUE, SLU, SME, St. Louis Carpenters Joint Apprenticeship Program, Spectra, STLCC, SWE, USACE, USCG, Univ. of Illinois, Wash University, & Workman Publishing have brought hands-on items that appeal to children and young adults.

We would like to thank again those who participated last year. If you did not participate last year, please consider participating this year. This event is an excellent way to introduce the wonders and power of engineering to a diverse audience. We look forward to hearing from you to make this event a success.

Thank you in advance for your participation.

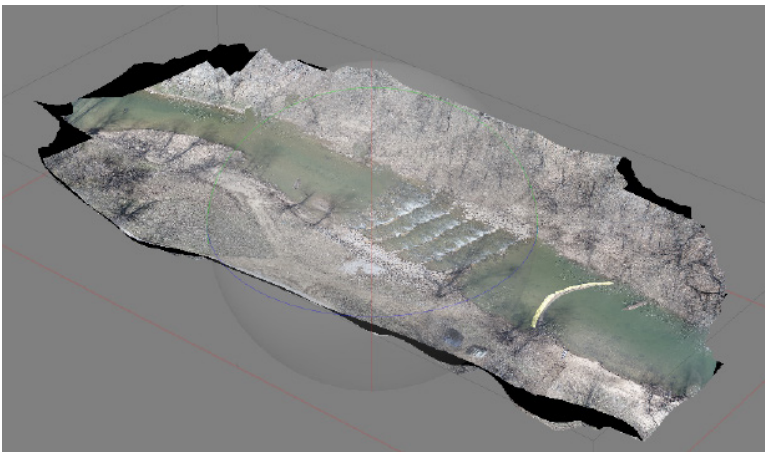
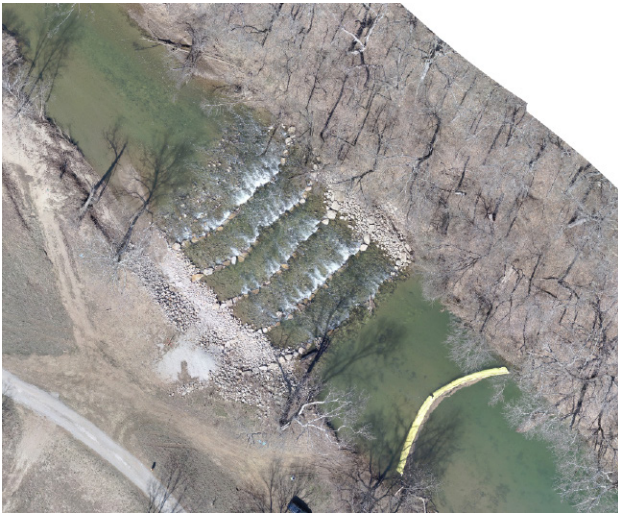
Sincerely,
Erin Jearls, P.E.
HDR
Ph: 314-425-8330
Email: erin.jearls@hdrinc.com

Ozark Chapter Thank You

MSPE Educational Foundation Drone Donation to Ozark Chapter

Thank you Missouri Society of Professional Engineers Educational Foundation for graciously donating a DJI Phantom 4 drone for education and outreach. This drone will be featured at Ozark Chapter Discover Engineering Day February 16th. The drone has already been examined by Electrical Engineering students in the Embedded Systems Club. These students disassembled the drone and analyzed the construction and performance. It's also been used in a surveying project involving MSU Civil Engineering and

Geography faculty, MSU Geospatial Science MS students, OEWRI, USACoE, and USEPA. This past summer the drone was explained, demonstrated, and utilized with high school students participating in the Discovery Center's Summer of Science. We expect this wonderful donation to be a feature in many of the Ozark Chapter outreach events. If you have questions please contact the drone education coordinator Matthew Pierson at MatthewPierson@MissouriState.edu



Central Chapter

Chapter Meetings

Central Chapter held a chapter meeting and tour on November 13. This event took place at CertainTeed Roofing Plant in Jonesburg.

For their December meeting, Carlos Sun, P.E. gave a Transportation Innovations presentation. The presentation reviewed ridesharing, carsharing, connected and autonomous vehicles, e-Scooters, drones and more. Dr. Sun is the Professor of Civil and Environmental Engineering at Mizzou with research and teaching interests in safety, ITS, work zones, networks, simulation, traffic flow theory, geometric design, roundabouts, planning, security, airport engineering, project delivery and legal issues.



Southwest Chapter

Barbecue Benefit



MSPE's Southwest Chapter held a chapter Meeting November 15 at Mythos in Joplin. Michael Atkinson with Allgeier Martin and Associates gave a presentation on the local "Rails to Trails" projects.

The Southwest Chapter also held a December Chapter Meeting at Hackett Hotwings in Joplin, Missouri on December 20. Nine members and three guests attended. Wings and beer were both happily consumed!



Jefferson City Chapter

Chapter Christmas Party



The Jefferson City Chapter Christmas Party and Gift Exchange was held on December 12, 2018 at Madison's Cafe in Jefferson City. The members, spouses and others attending enjoyed a great dinner followed by a spirited gift exchange that was very entertaining for all. Gifts were repeatedly "traded" back and forth in an effort to "choose wisely" and possess the best gift(s) at the end.



Jefferson City Chapter Semi-Annual Litter Cleanup for Adopt-A-Highway

On October 16, the Jefferson City Chapter gave back by working together to pickup litter on highways.



Chapter Lunch Meeting



Jefferson City Chapter Lunch Meeting October 31st included speakers Chris Yarnell, P.E. and Chris DeVore. They presented on the Parking Lot 11 Rehabilitation and Wears Creek Bank Stabilization in Jefferson City, Missouri.

St. Louis Chapter

November Joint Luncheon

The St. Louis Chapter held their November Joint Luncheon on November 13 at the Engineering Center with the American Society of Civil Engineers (ASCE). It was a well-attended event with a chance to learn about historic St. Louis Engineers and to visit with many colleagues.

Also, On December 13th the St. Louis Chapter hosted Tom Blair, P.E., at our monthly luncheon. Mr. Blair discussed the future of transportation in Missouri. He touched upon autonomous vehicles and discussed how they may become part of our daily commute. Autonomous vehicles of course present a current and "hot topic" not just in Engineering circles but to all citizens. Hearing the discussion from Mr. Blair, head of MoDOT Operations, provided yet another example of how participation in the St. Louis Chapter of MSPE can help you stay current and relevant as an Engineer.



Above, from left to right: Michael Buechter, P.E., D.WRE, President St. Louis Chapter MSPE; Chad Schrand, P.E., S.E., President St. Louis Section ASCE, and Steve Randolph, P.E.



Above, from left to right: Tom Blair, P.E., Breck Washam, P.E., and Michael Buechter, P.E., D.WRE. Mr. Washam is holding a certificate recognizing Burns & McDonnell Engineering Co., Inc. as a Sustaining Member of MSPE.

Ozark Chapter

Christmas Party, Chapter BYOE and Fullbright Water Treatment Plant Tour

The MSPE Ozark Chapter hosted a Christmas party on December 12 at Springfield Brew Company in Springfield.

The Ozark Chapter also hosted a Bring Your Own Engineer Chapter Meeting on November 1. ACEC of Missouri President Bruce Wylie gave an update on Safer MO Proposition D.

On November 28, the Ozark Chapter also did a Fullbright Water Treatment Plant Tour for the PEPP Division.

Most recently, the Ozark Chapter held a lunch meeting on January 3 with Speaker Dan Smith, P.E., Springfield Public Works Director. He spoke about the City of Springfield 1/4 Cent Capital Improvement Sales Tax on the April Ballot.



Professional Card Listings



E. Matt Bedinghaus, P.E.
CEO & Chief Engineer

3804 S. Fremont Ave.
Springfield, MO 65804
www.a2vpe.com

417-882-2221 (o)
417-942-8159 (m)
MBedinghaus@a2vpe.com



Civil Engineering
Land Surveying
Construction Testing Labs
Geotechnical Services
GIS Services
Commercial Drone Services

866.866.2741
AndersonEngineeringInc.com
info@andersonengineeringinc.com



BLACK & VEATCH

**Kansas City
St. Louis**



burnsmcd.com | *Offices Worldwide*

**International reach.
Local presence.**



Springfield: 417.831.9700
geoengineers.com

From 13 offices nationwide, GeoEngineers crafts geotechnical, geological, environmental and trenchless solutions for clients worldwide.

GREDELL Engineering Resources, Inc.

ENVIRONMENTAL ENGINEERING LAND-AIR-WATER

Jefferson City, Kansas City and Springfield, Missouri

Since 2001

*Engineering Design, Geologic Studies,
Regulatory Compliance and Water Resources*

Telephone (Toll Free) (855) 420-3831

E-Mail: Contactus@ger-inc.biz

Visit our Website: www.ger-inc.biz



Ronald E. Hill, P.E.
CEO / CoFounder
(816) 796-2900 ext. 202

HEMCO Corporation
711 S. Powell Road
Independence, MO 64056

ronh@hemcocorp.com
FAX: (816) 796-3333
www.HEMCOcorp.com

Visit: www.HEMCO Corporation.com

TRANSPORTATION
+
WATER
+
GOVERNMENTAL SERVICES
+
LAND DEVELOPMENT
+
ENVIRONMENTAL
+
CONSTRUCTION



▶ HRGREEN.COM

Knapp

ADVISORY GROUP

James C. Knapp, AIF® Managing Partner

www.KnappAdvisory.com
913-544-1509

james.knapp@lpl.com
314-323-7094

Securities offered through LPL Financial, member FINRA/SIPC

PPI

- Geotechnical Services
- Environmental Services
- Material Testing Services

PALMERTON & PARRISH, INC.

Springfield, MO
417-864-6000

Branson, MO
417-561-8395

Joplin, MO
417-624-2005

www.ppimo.com

SMITH & CO.
ENGINEERS

901 VINE STREET; P.O. BOX 72
POPLAR BLUFF, MISSOURI 63902
(573) 785-9621 FAX: (573) 785-2651
WWW.SHSMITHCO.COM

-ENGINEERING -SURVEYING -ENVIRONMENTAL -GEOTECHNICAL

We Have Space Available!

Add Your Firm Today!

Contact *The Missouri Engineer* at 573-636-4861
or email Rachel Ninceheler at rninceheler@mspe.org

NSPE-MO®

MISSOURI SOCIETY OF
PROFESSIONAL ENGINEERS