

The Missouri Engineer

The official publication of the Missouri Society of Professional Engineers, whose mission is to promote the ethical and competent practice of engineering.

A Message From Your 2018-2019 MSPE President

Michael Purol, P.E.



It has been a busy summer for MSPE staff, officers, and members. Our chapters have held several great events. Unfortunately I have not been able to make them all, but it has been a great experience attending the ones I have been able to make. The President's Workshop was well attended. Past NSPE President Tom Roberts gave a presentation on "Effective Chapters" and a NSPE update. Jeff Glenn from Mercury Alliance also presented an update on Prop D and gave advice on "Grass Roots" effort for the campaign.

The joint MSPE-Western Chapter and KSPE-Eastern Chapter meeting, which

included a visit from NSPE President Michael Aitken, was great as always. This started with a well-attended breakfast at 7:00 am, then moved to a tour/meeting with the UMKC-Engineering Department. A tour of the Linda Hall Library was one of the highlights of the trip, and a tour I highly recommend for members. Who knew the most complete archive of Engineering Journals and documents are right here in Kansas City?

A Special Board of Directors meeting was held on October 12 to adopt By-law revisions, which were discussed in detail at the Annual Convention. The Administrative revisions were passed by unanimous vote of those present. In addition to the administrative changes, the Executive Committee was authorized to call a special meeting of the membership to review and hopefully approve the Governance revision. A date for this meeting is TBD.

The Executive Committee also met on October 12 and had a very effective meeting. The Committee was updated on several activities. Matt

Bedinghaus presented a report from the Financial Oversight Committee. The Committee made final recommendations for improved oversight and protection of the Society's finances, all of which were discussed and adopted by both MSPE and the MSPE – Education Foundation.

Stacey Meyer presented on behalf of the Membership Committee. The Committee continues to work hard to keep our members informed and to increase membership across all chapters. Staff updated the Executive Committee on efforts with NSPE to update/correct both (state and national) data bases so we have one database moving forward. We knew this was going to be a large task to review and double check membership data for over 1,000 members, but progress is being made. Please be patient with us during this transition to the integrated model, and if anything with your membership records appear to be wrong, please notify Stacey either by phone or e-mail. (573.636.4861 or smeyer@mspe.org)

-Michael Purol, P.E., MSPE President

"My formal education, along with continued education has given me the technical skills required for my career. However, MSPE has given me the opportunity to improve my soft-skills including leadership skills, which has helped advance my career."

-Michael Purol P.E., MSPE President, 2018-2019

Inside the Issue

State News

Welcome New Members!	3
Sustaining Organizations	3
Executive Director Message Travis Lowe	4
Executive Committee Meeting October 12	5
2018 Legislative Report By Mark Rhoads, MSPE Lobbyist	6
MSPE Building Improvements By Greg Braden, Building Manager	7
MSPE Life Membership	7
Fall P.E. Ceremony By Stacey Meyer	8
2018 President's Workshop September 14	9
Member Spotlight Anika Careaga, P.E., CPESC, CPSWQ	10
MSPE Practice Divisions PEPP, PEG	11
MSPE New Website Live Login Instructions	12
MSPE 2019 Annual Convention June 17-19, 2019	13
Consider New MSPE Logo Evolution of MSPE Logos	14
Proposed New MSPE Logos State, Chapter, Social Media	15

NSPE News

NSPE 2019 Annual Conference July 17-21, 2019	17
National Engineers Week February 17-23, 2019	17
NSPE North Central Director Elected By Matt Kruse, P.E.	18
2019 PECON Planning Committee MSPE's Gary Strack to Chair	18
The Future of Professional Engineering By Adam Stodola, P.E.	18
NSPE President's Visit to KC Joint Breakfast Meeting: MSPE/KSPE	19



Chapter News

Calendar of Events Mark Your Calendars!	21
MSPE's 2018 Fall PDH Days December 12-13, 2018	21
Southwest Chapter Barbecue Benefit	22
Jefferson City Chapter Shrimp Feed and Wing Ding	22
Central Chapter Chapter Meeting	23
Ozark Chapter Chapter Lunch Meeting	23
Rolla Chapter Missouri Water Law Event	23
Western Chapter NSPE President's Visit	24
Upcoming Southwest Chapter Event Thursday, November 15, 2018	25
Ozark Chapter BYOE Event Thursday, November 1, 2018	25

Advertisements

Professional Card Listings Advertise in <i>The Missouri Engineer</i>	26
--	----

Editor's Message: Please enjoy the 2018 Fall Issue of the Missouri Engineer. If you have any engineering-related photos from your work that you may like to see featured in future editions of the ME, please send them to rnincehelsler@mspe.org. Thank you, and enjoy your read!
-Rachel Nincehelsler, Editor, Director of Communications

The Missouri Engineer is published semi-monthly by the Missouri Society of Engineers, 200 E. McCarty St., Suite 200, Jefferson City, MO 65101. Subscription fees are \$1 per year to MSPE members and \$12 per year to non-members. Opinions expressed by authors herein are not necessarily those of the Society. As a matter of policy, MSPE does not endorse any item, product or advertisement.

Correspondence regarding advertising, articles and changes of address should be mailed to:

The Missouri Engineer
c/o Rachel Nincehelsler, Editor
200 E. McCarty Street, Suite 200
Jefferson City, MO 65101
Phone: 573-636-4861
Fax: 573-636-5475
www.mspe.org



Welcome New Members!

Northeast Chapter

Quentin Gehring, P.E.
Poepping Stone Bach & Assoc.
801 Broadway, Suite 224
Hannibal, MO 63401

Western Chapter

Sunil Kumar, P.E.
Black & Veatch
14536 Newton St.
Overland Park, KS 66223

Western Chapter

Caleb Mitchell, P.E.
Burns & McDonnell
9400 Ward Parkway
Kansas City, MO 64114

Ozark Chapter

Kirkland Preston, P.E.
City of Springfield Public Works
4336 West Page St.
Springfield, MO 65802

St. Louis Chapter

Nathaniel Anderson, P.E.
MGT Consulting Group
10717 Antrill Dr.
St. Louis, MO 63123



Sustaining Organizations

Sustaining Organizations offer your firm:

- *The ability to demonstrate its interest in professional engineering.*
- *An open line of communication with engineering interests throughout Missouri.*
- *Clear indication of your support of the P.E. license and the Missouri Society of Professional Engineers.*
- *The ability to partner with MSPE to maintain and expand a high level of programs and activities for the benefit of both organizations and its individuals.*

MSPE's Sustaining Organization firms:

A2V Partners, LLC
Springfield, MO

ABNA Engineering, Inc.
St. Louis, MO

Allgeier, Martin & Associates
Joplin, MO

Allstate Consultants LLC
Columbia, MO

Ameren
St. Louis, MO

American Concrete Paving Association
Overland Park, KS

Anderson Engineering, Inc.
Springfield, MO

Black & Veatch
Kansas City and St. Louis, MO

Burns & McDonnell, Inc.
Kansas City and St. Louis, MO

Cook, Flatt & Strobel, Engineers, P.A.
Topeka, KS

Gaskin Hill Norcross, Inc.
Springfield, MO

George Butler Associates, Inc.
Lenexa, KS

Gibbens Drake Scott, Inc.
Raytown, MO

Gredell Engineering Resources, Inc.
Jefferson City, MO

HNTB Corporation
Kansas City, MO

Holmes Murphy
Overland Park, KS

Horner & Shifrin, Inc.
St. Louis, MO

Kuhlmann design Group
St. Louis, MO

Lockton Companies
Kansas City, MO

McClure Engineering Co.
Iowa and Missouri offices

Palmerton & Parrish, Inc.
Springfield, MO

Scurlock Industries
Springfield, MO

Strickland Engineering
Jackson, MO

The Piker-Kulesa Group & RBC Wealth Management
Leawood, KS

Walter P. Moore and Associates, Inc.
Kansas City, MO

Executive Director Message

By Travis Lowe

MSPE Members,

We hope this publication finds you well. It is our pleasure to serve as your staff. We are excited to produce this record-size publication highlighting MSPE news on multiple fronts. We have many updates to share, but first we want to thank you for your continued support of MSPE that comes in so many ways.

MSPE is continuing to increase our communications presence to the membership and industry. Our new website is live at www.mspe.org. This site is powered by the Wild Apricot membership software selected by the MSPE Executive Committee and IT Committee that provides streamlined services. This is reducing our overhead vendor costs too. We will work to keep this site updated as the main communication center for the membership. Please provide us any chapter or practice division updates so we can share that news. Also, all MSPE social media platforms are growing in "followers" and "likes". As a reminder, MSPE staff manages the MSPE Facebook and LinkedIn accounts and has also created a MSPE Twitter and Instagram account, which they also manage.

As the months fly by, we are growing closer to our next

MSPE event. Fall PDH Days is scheduled for December 12-13, 2018 at the Capitol Plaza Hotel in Jefferson City. Online and mail-in registrations are open, so sign up today! The Fall PDH Days Committee and staff have done a great job in finalizing the event schedule. Thank you to the Committee for your help and all the attendees who plan to make it.

Mark your calendars for the MSPE 2019 Annual Convention on June 17-19 at Lake of the Ozarks. MSPE staff is working with the 2019 Conference Planning Committee to finalize the agenda and is making great progress. Several format changes have been made to make the event more affordable and attractive to a broad base of attendees. The Committee has approved eliminating activity on Father's Day and starting on the following morning (Monday, June 17). Conflicting with Father's Day was the most common complaint in the survey results received after the 2018 event. The Convention will still end on Wednesday afternoon, making the Convention two-and-a-half days instead of three-and-a-half. Several other options and opportunities are being considered to drive up attendance and lower overhead cost. We have great seminars planned and want to have a record size attendance. What great way to build a strong MSPE!



We just finished a successful 2018 President's Workshop that was held on September 14 at the MSPE office. MSPE staff put together a strong agenda that included NSPE Immediate Past President Tom Roberts and Mercury Alliance Executive Director Jeff Glenn as speakers. Also, MSPE planned and held the semi-annual Licensure Ceremony for newly licensed P.E.s at the Capitol building on September 29. Check out the photos in this issue.

Most recently, NSPE President Michael Aitken traveled to Kansas City on September 26 and 27 for the 55th Annual President's visit to MSPE and the Kansas Society of Professional Engineers. A dinner took place on the first evening that included the president of both societies, presidents of both local chapters and me. The following morning Michael Aitken spoke to MSPE Western Chapter and KSPE

Connect With Us on Social Media!

"Like"



Missouri Society of Professional Engineers

Facebook Page

Page 4

"Follow"



@theMOengineer

Twitter Page

"Follow"



@theMOengineer

Instagram Page

"Connect"



MSPE-Missouri Society of Professional Engineers

LinkedIn Page

Executive Director Message

Eastern Chapter leaders over breakfast. Later in the evening, the MSPE Western Chapter held a joint dinner with the KSPE Eastern Chapter for all members. Conversations focused on threats to the P.E. It's great to have NSPE as a resource for us.

You may not be surprised because of all of the campaign commercials, but its time to put our legislative hats back on and prepare for the next legislative session. We are in regular communication with MSPE's contract lobbyist Mark Rhoads. We are also rebuilding an active Government Relations Committee to meet to

review legislation that may impact Licensed Professional Engineers.

We strongly encourage you to go to the polls next week and vote YES on Proposition D.

Proposition D is a referendum to fund Missouri highway construction and maintenance and more. MSPE stands beside ACEC and other allies and has formally endorsed Prop D. This is a tight race so please bring your friends and family to the polls on November 6!

We want to thank you again for your support of MSPE. It is our pleasure to serve.

-Executive Director Travis Lowe



Executive Committee Meeting

On October 12 Executive Committee members gathered at the MSPE office in Jefferson City to act on Association businesses. The Committee discussed NSPE news, the 2018 President's Workshop, communications, upcoming events, financials, and several committee reports.

President Michael Purol said he plans to create a new MSPE Bylaws Committee to make additional needed changes. He is also looking at ways to address Board oversight of the MSPE Educational Foundation. The outgoing Bylaws Committee, chaired by John Huss, has completed its charge of making amendments to reconcile the new policies within the NSPE membership model.

In the Executive Director's report, Travis



Left to Right: Greg Braden, Stacey Meyer, John Huss, PE, CDT, Bob Becnel, PE, John Riediger, PE, Mitchell Gibler, EI, Mitch Krysa, PE, Travis Lowe, Michael Purol, PE, Ron Black, PE, Rachel Nincehler

Lowe provided several updates, including the increased membership communications presence. All MSPE social media platforms are growing in "followers" and "likes". The Summer issue of the Missouri Engineer was 17 pages, setting a record size publication through at least the last nine years of known past issues. MSPE leadership discussed excitement for the upcoming Fall PDH

Days as well as the 2019 MSPE Annual Convention next June. The Conference Planning Committee is making great progress on the activities.

The Committee also discussed activity on technical accounts, financial oversight, government affairs, consideration of new MSPE logo, nomination of NSPE Fellow, and the IT Committee. The next Executive Committee meeting is on January 18, 2019 in Jefferson City.

2018 Special and Veto Session Report

By Mark Rhoads, MSPE Contract Lobbyist

September 17, 2018

Overview:

This week the Missouri General Assembly met in special session called by Governor Mike Parson and concurrently in the constitutionally mandated veto session on Wednesday. Governor Parson was very specific in his call for the special session, limiting the issues to two bills that he had vetoed relating to drug courts and science, technology, engineering and math (STEM) programs.

In the News...

This week the Missouri Senate confirmed 31 gubernatorial appointments and 13 reappointments to a variety of boards and commissions. Senator Jamilah Nasheed (D-St. Louis) objected to the reappointment of Peter Herschend to the State Board of Education and pushed for a separate vote on all appointees. Mr Herschend, a Republican and owner of Branson's Silver Dollar City, has served for 24 years on the State Board. After much confusion and parliamentary maneuvering, Senator Nasheed met with the Governor's office and was successful in forcing the Governor to withdraw Mr. Herschend's appointment. Additionally, the Senate took separate votes on Patricia Thomas and Alan Roland as members of the Missouri Clean Water Commission and approved both appointees.

On Wednesday the Senate swore in former Representative Lauren Arthur who won a special election in District 17 (North Kansas City, Clay County). She replaces former Senator Ryan Silvey who resigned his office to serve on the Missouri Public Service Commission.

Jefferson City bars, restaurants and caterers reaped the economic benefit of over 50 fundraisers conducted Monday through Wednesday. Of course, the real benefactors were the 80 or so candidates who pulled in tens of thousands of dollars.

Cole County Circuit Judge Daniel Green issued a ruling that Amendment 1, Clean Missouri, be removed from the November 6, 2018 ballot. The lawsuit, brought by the Missouri Chamber of Commerce and Industry, focused on how the language of

Amendment 1 included language for several different issues into a single ballot item. This is not allowed under the Missouri Constitution. Attorney Chuck Hatfield, who represents Clean Missouri, immediately filed an appeal and stated they will file a brief this weekend.

Special Session

HB 2, sponsored by Rep. Kevin Austin (R-Springfield) would expand Missouri's treatment court system to all counties in the State. The bill allows a circuit court to establish a treatment court division that could include a DWI court, family treatment court and veterans' treatment court. During debate on the bill in the Senate, Senator Jamilah Nasheed (D- St. Louis) unsuccessfully attempted to amend the bill to include mental health courts as part of the bill.

HB 3, sponsored by Rep. Travis Fitzwater (R-Fulton), would create a program to increase STEM career awareness for students in middle schools. The bill provides an on-line STEM curriculum. Governor Parson had vetoed the bill because of specific standards that were included that could have favored a vendor. Both of these bills passed the General Assembly overwhelmingly and will be signed by Governor Parson.

Veto Session

Governor Mike Parson vetoed two bills (relating to drug treatment courts and STEM programs), on Senate Concurrent Resolution (SCR 50 which requested the U.S. Congress to replace the statue of Thomas Hart Benton in the Statuary Hall of Fame with a statue of Harry S. Truman) and 21 budgetary line items. None of these were overridden by the full General Assembly.

The House voted to override the Governor's budget line items as follows:

- \$45,000 for a new position in the Missouri Commission for the Deaf and Hard of Hearing;
- \$100,000 for the Office of Child Advocate to fund two positions to review foster care management;
- \$153,546 to provide funding and staffing for the Time Critical Diagnosis Program that designates hospitals as trauma,

stroke or STEMI centers;

- \$487,000 for the State Public Defender System to create a Children's Defense Team to work with the state's juvenile indigent population.

The Senate refused to consider the budgetary overrides. As noted above, the issues relating to STEM and treatment courts were fixed and passed during the special session.

Budget Update

State Budget Director Dan Haug recently announced that state revenues were down 6% compared to this time (end of August) last year. The Governor's office is working to identify the cause of the significant decrease in revenues. State agencies and departments submitted their FY 2019 budget requests to the State Office of Budget and Planning on October 1st for review by the Parson administration.

Election Review

All 163 House seats and 17 of the 34 Senate seats are up for election on November 6. The statewide offices of U.S. Senate (Hawley vs. McCaskill) and State Auditor (McDowell vs. Galloway) will also be decided on election day. The House is expected to see approximately 50 new members and the Senate will see 10 new members as a result of resignations and term limits.

Dates of Interest

- **December 1, 2018** – Pre-filing of legislation begins for the 2019 Legislative Session
- **January 9, 2019** – First day of the 2019 Legislative Session
- **January 14, 2019** – Martin Luther King Day – No Session
- **March 1, 2019** – Last day to file House and Senate bills
- **TBD** – Legislative Spring Break
- **TBD** – Easter Break – No Session
- **May 17, 2019** – Last day of the 2019 Legislative Session



Building Improvements to the MSPE Building

By Greg Braden, MSPE Educational Foundation Building Manager

The downstairs floor of the building owned by the MSPE Education Foundation has received a bit of a make-over in recent weeks. As members may know, the building on 200 E. McCarty Street is owned by the MSPE Education Foundation and leases office space on the top floor to MSPE and ACEC Missouri. The downstairs 3,000 feet was previously occupied by a tenant for many years, but was vacated a year ago. Since then the downstairs space has remained vacant.

When MSPE hired Braden Heidner Lowe & Associates (previously Gaches Braden & Associates) in July, there was a strong emphasis put on helping to make the vacant space more attractive to potential tenants. In August staff proposed a series of improvements that included repainting the downstairs a consistent color and steam cleaning

the carpets. There was also a small mold problem to be addressed and fixed. The Foundation Executive Committee approved the recommendations and they were completed. Other small projects upstairs are also underway.

Walking into the downstairs space is now a much more pleasant feeling. There is 3,000 square feet of office space available and signs have been posted on the windows at the building's northwest corner at the street intersection. Please refer any leads to me at gbraden@mspe.org.



“The lower level of the MSPE EF building which had been leased by MCCA for the past 20 years just needed a little help. The MSPE EF Board approved repainting the walls and steam cleaning the carpets to freshen up the space. While it’s no guarantee that these upgrades will get the space leased again, we now stand a much better chance of getting a second look from any prospective tenants.”

-Greg Braden, Foundation Tenant Manager

MSPE Life Membership

Every year MSPE's Life Members receive a letter highlighting the previous year's activities and outlining MSPE's President's objectives for their administrative year. The Annual Life Member correspondence - per the society's bylaws - also requests continued support of MSPE's mission through a voluntary contribution. Without fail, the response from the society's Life Members is prompt and generous.

The Annual Life Member letter also presents an opportunity to provide updates to personal information. Any life member who needs or wants to update their member information is encouraged to contact Membership Coordinator Stacey Meyer by phone at 573-636-4861 or via email to smeyer@mspe.org.

Below are the names of Life Members making generous contributions. On behalf of a grateful membership and MSPE's professional staff, our sincere thanks is extended to the following members, listed by chapter, for their continued support and generosity.

Central Chapter

Anthony Bonderer, Fulton
William Reinhardt, Oakdale, MN
Robert Whitehead, Columbia

Jefferson City Chapter

Garry Chegwidden, Jefferson City
Ed Rackers, Jefferson City
William L. Trimm, Jefferson City
Bill Washburn, Jefferson City

Rolla Chapter

Jerry Gilmore, Rolla

St. Louis Chapter

John Beirne, Creve Coeur
Charles Buescher, Chesterfield
William P. Clarke, St. Louis
Charles Gillespie, St. Louis
Joseph Gudiswitz, St. Louis
Edmund Johnson, St. Charles
Roland Schoenhoff, Florissant
Arthur Wernle, Chesterfield

Southwest Chapter

Virgil Carr, Granby

Western Chapter

William (Bill) Anthony, Lenexa, KS
Joel Cerwick, Overland Park, KS
James Guthrie, Prairie Village, KS
John Krall, Liberty
David Lillard, Prairie Village, KS
George Satterlee, Overland Park, KS
Benjamin Stables, Laguna Woods, CA
James Steele, Lee's Summit

At Large

James T. Odom, Hallsville



Fall P.E. Ceremony By Stacey Meyer

MSPE's most recent P.E. Certificate Ceremony drew 16 newly-registered Professional Engineers to the state capitol to receive their licensure certificate. MSPE Executive Committee members President Michael Puro, P.E., Past President Ron Black, P.E., PMP and Britt Smith, P.E. F.NSPE (Master of Ceremonies) attended the event.

Twice a year the Missouri Society of Professional Engineers hosts a license certificate presentation event for newly licensed professional engineers (P.E.s) at Missouri's state capitol rotunda in Jefferson City. The event provides a unique opportunity for MSPE to recognize the newly-licensed P.E.s and applaud their achievement in passing all the hurdles to licensure - education, experience and examination. Invitations are sent to all engineers who have passed the professional practice exam to attend and bring their families and parents to help honor this benchmark in their career.

Our most recent P.E. Ceremony was held on Saturday, September 29, 2018, with 16 newly licensed professional engineers and their families attending. Words of wisdom were delivered to the new P.E.s by Kevin Skibiski, P.E., S.E., P.L.S., Chair of Engineering

Division, Missouri Board for Architects, Professional Engineers, Professional Land Surveyors and Professional Landscape Architects. The Honorable John A. Ashcroft, Missouri Secretary of State, was the Keynote Speaker.

Volunteers from MSPE chapters supported Stacey Meyer, MSPE Membership Director and Planning Coordinator, in making the event a lasting impression the new P.E.s will remember their entire career. These volunteers included Jason Sommerer, PE - MSPE Membership Chair, Jefferson City Chapter, Michael Buechter, PE - St. Louis Chapter President, and the Conductor for the Order of the Ceremony Dr. J. Derald Morgan, PE, FNSPE - Ozark Chapter. MSPE also extends its appreciation to the Board for Architects, Professional Engineers, Professional Land Surveyors, and Professional Landscape Architects, for their support before and during the ceremony. Six participants took part in the Order of the Engineer Ceremony where they received rings.

MSPE Executive Committee members present personally invited the new PE's to join MSPE's efforts to protect and defend the licensure law during a reception after the event.



2018 President's Workshop

MSPE President Michael Purol, P.E. invited all chapter and practice division leaders to join him and the MSPE Executive Committee to the kick-off event for the 2018-2019 Annual President's Workshop.

The event was held on September 14, 2018 at the MSPE office in Jefferson City. MSPE Executive Director Travis Lowe presented an updated office operations report, as well as ways the state office can help connect and promote chapter news.

NSPE Immediate Past President Tom Roberts, P.E., F.NSPE had presentations on best practice techniques for chapters, along with a NSPE update.

Jeff Glenn, who serves as Executive Director of the Mercury Alliance, provided an update on the benefits of Proposition D.



Member Spotlight

Anika Careaga, P.E., CPESC, CPSWQ

Chapter: Jefferson City

Education/Registration:

Graduated with honors from the University of Missouri-Rolla (UMR, now MO S&T) with a B.S. in Civil Engineering, an emphasis in Environmental and has been a registered PE in MO since 2005. Attained the status of a Certified Professional of Erosion and Sediment Control (CPESC) and a Certified Professional of Storm Water Quality (CPSWQ) from EnviroCert International, Inc. Currently a registered P.E. in Missouri, Kansas and Oklahoma.

What is your employment/education history?

Since joining Midwest Environmental Consultants (MEC) in 2002, I have worked primarily in solid waste and stormwater design. I serve as a senior project manager for MEC providing engineering design services related to landfill design, stormwater management including Low Impact Development (LID), stream bank stabilization, land reclamation and related projects for municipal and private-sector clients.

Prior to joining MEC, I worked for MoDOT and evaluated erosion control products to create new erosion control specifications that are currently used statewide by MoDOT.

Tell us about your family:

Married since 1999 to Jacob Careaga, PE., who is also a 1998 UMR graduate, with six children (Katerina – 19, Jackson – 17, Nikolai – 15, Aleksandr – 12, Anneliese – 10 and Maksim – 7). The gap between the first three kids and second set of three is when my husband and I were both studying for our PE tests. We joke our PEs are the babies in the middle.

What is your greatest accomplishment to date?

My greatest accomplishment has been balancing a successful career while raising six very involved kids. I truly have the best of both worlds by working at MEC! I work ¾ time and my company allows me to flex my hours as needed during the calendar week. I am also given the option to earn comp time if some weeks require more hours. MEC strives to provide on-time quality products to our clients while providing a family-friendly work environment for employees. This flexibility allows me to be a better mom and a better engineer.

One fun fact about you:

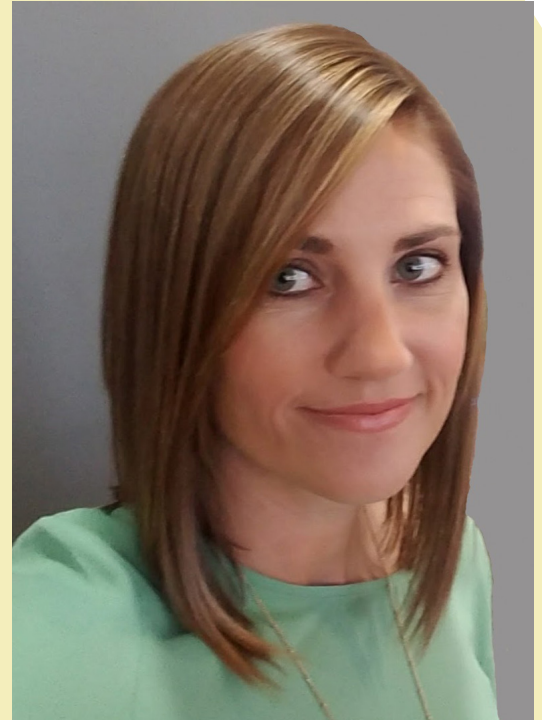
1998 UMR Homecoming Queen and Greek Week Goddess (Artemis) in the same semester my senior year.

What do you like to do with your free time?

I love to explore new places with my husband and family! Our kids stay very busy with wrestling, football, soccer, cross country, school plays, and robotics. However, we try to take as many road trips as we can as a family. So far the kids have seen about half of the states in the U.S. but we have more yet to explore.

Why did you become an engineer?

A teacher in sixth grade told me I should be an engineer since I was good at math and science, but I didn't understand why she thought I should drive a train. After that I researched more about engineering (which was hard to do before Google). Through my research during junior high I decided civil/environmental engineering was a perfect fit for me, especially when I discovered landfill design. I even did an original oratory speech my freshman year in high school about all the engineering aspects behind modern landfill design



(it was 1992 when the Subtitle D regulations were coming out). Through my career I have designed all aspects sanitary, demolition and utility waste landfills including the geotechnical aspects of the site locations, liner/cap design and stability analysis; the hydraulics of the leachate piping systems; the hydrology of the stormwater design; the mechanical/chemical engineering aspects of the gas extraction system; and the statistics of the groundwater monitoring system.

If you weren't an engineer, you would be a: Mathematician. I had a 4.0 at Rolla in all my math classes, including Diffescrew (also known as Differential Equations).

Favorites

Restaurant: Love Sushi

Vacation spot: Any pretty beach

Sports team: Helias Crusaders (we have/had/will have kids on almost every team)

Song or Music Artist: Spice Girls (No, really! I even saw them in concert.)

The Member Spotlight is a new series to the ME that will feature a member each issue.

MSPE Practice Divison Updates

Professional Engineers in Private Practice (PEPP)

By Tim Quinn, P.E.

Greetings fellow engineers and welcome to the 2018-2019 fiscal year. My name is Tim Quinn P.E. and it is an honor to be the MSPE Professional Engineers in Private Practice (PEPP) Chairman. I am approaching eleven years working for Burns & McDonnell in the energy sector and have been involved in MSPE at the chapter (St. Louis) and state level for about the same amount of time.

For my first order of business, I would like to thank (on behalf of the PEPP Board) our Immediate Past Chairman, Clayton Cristy P.E. (Olsson Associates), for his time and efforts. Clayton is committed to MSPE and has a lot to offer. I look forward to sharing his wisdom as I carry out my term.

The remaining roster of the 2018-2019 PEPP Board is comprised of familiar names and I am excited

to work along side such talent and integrity. Derek Vap P.E. (HNTB Corporation) serves as our Chair Elect and is tasked with handling the annual PEPP budget and legislative interests. Tom Greer P.E. (Burns & McDonnell), Rachel Goeke P.E. (Palmerton & Parrish), and Josh Lehmen P.E. (Engineering Surveys & Services) serve as Vice Chairs and will handle membership, PEPP initiatives, and awards respectively. Last but not least, we welcome Mike Atkinson P.E. (AMAI Architecture) to the PEPP Board as our Secretary/Treasurer.

MSPE PEPP kicked off the year with a highly productive fourth quarter meeting in late September. We generated a solid list of candidates for nominations for NSPE Fellow, the Distinguished Service Award, the Professional Development Award, and the Quality-Based Selection Award. We also discussed



plans for the fiscal year budget and decided that our PEPP initiatives will revolve around membership. The PEPP Board looks forward to sharing our initiatives in the next issue of the Missouri Engineer.

I hope you had a great summer, and I look forward to seeing you at some upcoming MSPE events.

Sincerely,
Tim Quinn, P.E.

Professional Engineers in Government (PEG)

By Eric Seaman, P.E.

Is there a government engineer you know who has gone a step beyond to protect public health and welfare? Any engineer/bureaucrat who has placed service before profit and standing of the profession before personal advantage?

You can nominate this individual for the

Professional Engineer in Government 'Engineer of the Year'. Nominations will be accepted up to March 29, 2019.

If you have any questions or want to obtain a nomination form, please contact Eric Seaman, P.E. eseaman@jeffcitymo.org.



MSPE Launches New Website

Visit www.mspe.org

JEFFERSON CITY- The Missouri Society of Professional Engineers has announced the new website live at www.mspe.org. The new website is powered by Wild Apricot membership software, which is now being used by association staff. Wild Apricot membership software was selected for use by MSPE's IT Committee in April 2018 to streamline services.

The new website includes the information that existed on the previous website with several enhancements. A strong emphasis is being put on the site to increase communication between chapters and members across the state. MSPE staff is strongly encouraging chapters to send the state

will be posted on the state website with local events listed on the events page. The new site also provides for several streamlined work and cost efficiencies as Wild Apricot membership software continues to be implemented. For example, the previous association website existed independently at a cost, while mass email distribution to membership utilized another vendor program. Moreover, the Association's database is currently managed by additional vendor software and none of the programs directly link to each other, causing extensive staff time to ensure data and content is entered properly every time a change is made. Each program also requires its own monthly fees paid by the association.

In contrast, Wild Apricot

membership software allows all of the same services to be used by one program for one fee. Data is entered just once, which will reduce the potential for error. Plans are underway to upload the membership database to Wild Apricot this fall.

MSPE Executive Director Travis Lowe said he is excited about the new software. "This change will save the Association money while simplifying our work. Our Association management team has had the opportunity to use Wild Apricot membership software for ten of our association management clients. We have improved accuracy and efficiency with this software, which allows us to better focus our staff's talents toward membership retention, solicitation and other best practices."

MSPE New Website- What You Need to Know

Login Instructions

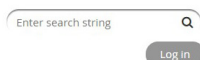
The new Wild Apricot membership database will allow you to log into the mspe.org website and be able to make changes to your account yourself. If you change companies, email addresses, or contact information, instead of emailing us these changes, you will log into the MSPE website and make the

adjustments yourself. This will improve efficiency and accuracy.

This applies to both "three tier" and "two-tier members". For "three-tier" members, even if you make that change on the NSPE website, you will still need to make those changes with us on the MSPE website.

From the website you will be able to see all the upcoming events as well as be able to register online for Fall PDH Days, Annual Convention, certain chapter events, etc. that utilize online registration. You can also renew your membership, pay it online, or request an invoice.

The content on the website should look very similar but more user friendly. If you haven't spent much time on the MSPE website now is the time to check it out!



Home About Us Chapter List Join MSPE Advocacy Events

MSPE Protecting and Enhancing Your Career Investment



To get started...

Log in to MSPE's website with your email associated with your membership. You will be prompted to reset your password by clicking "reset password". You will be emailed a new password and can then change it from there.

MSPE
2019
Annual Convention
June 17-19

**Camden on
the Lake**



MSPE Board to Consider Adoption of New MSPE Logo

The Evolution of MSPE Logos

The MSPE Board will consider the adoption of new logos when they meet in January. Last month the Executive Committee reviewed the possibility of changing the logo to make MSPE more consistent with counterpart societies.

According to NSPE, 40 of the 48 state and territorial integrated societies have adopted the new NSPE state logo. Several members have reached out to the MSPE staff about whether MSPE will adopt as well. NSPE has created logos for all

the chapters and several formats that are available for states if they choose to use them.

President Michael Purol, P.E. proposed the idea of MSPE adopting the new logo to be consistent with the other 40 state societies for the purpose of a consistent brand on the Association's website and social media.

The existing state logo will be kept as "MSPE's legacy logo" and will be used on the MSPE building and state legislative testimony. This means no logo change will have to take place on

the inside or outside of the building and preserves the "MSPE roots" while bringing MSPE consistent with the other state societies.

The Executive Committee voted to ask the Board to consider the changes when they meet on January 19.

Please see the evolution of MSPE's logos starting from 1944 to now featured below and proposed new logos on the next page.



MSPE Logo Evolution



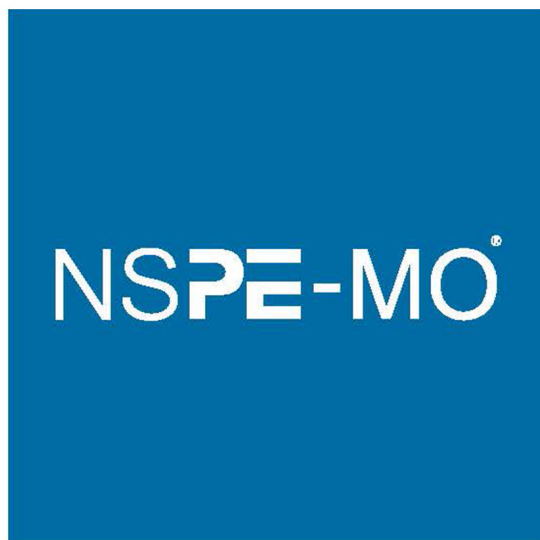
Proposed MSPE State Logos



Proposed MSPE Chapter Logo



Proposed MSPE Social Media Logo



NSPE NEWS



Mark Your Calendars!

NSPE 2019 PE Conference

July 17-21, 2019

Kansas City Marriott Downtown



Champion | Guide | Advance | Unite

DISCOVER



ENGINEERS WEEK

FEBRUARY 17-23, 2019



NSPE North Central Director Elected Message from Matt Kruse, P.E.

Hello fellow NSPE members and colleagues: I would like to take a minute to introduce myself as your new North Central Region Director. My name is Matthew Kruse from Omaha, NE and in August of this year, I assumed the role of regional director from Gary Strack. I am the Roadway and Traffic Practice Group Leader for Lamp Rynearson. I hold Professional Engineering licenses in Nebraska, Iowa, Colorado, Kansas, and Missouri. For those of you who may not be totally familiar with the regional director position, the North Central Region is made up of North Dakota, South Dakota, Minnesota, Nebraska, Iowa, Kansas, and Missouri. The director position is a two-year term and the main responsibility of the Director is to serve as a conduit of information between the state societies and the executive board.

In July of this year at the Annual PE Conference in Las Vegas, NSPE kicked off a new strategic planning effort. Now that the new membership model has gone into effect and the completion of the Future of the Professional Engineering report, the Executive Board felt the time was right to look at the entire organization of NSPE as a whole and to develop an updated strategic plan that will focus on how NSPE operates, the value and services provided by NSPE to its members and public, and the relationship between NSPE, NICET, and the state societies. A strategic planning session took place at NSPE headquarters in Alexandria, VA in late September. From this session the following main areas of focus were developed: Shaping of Public Policy, Educating for the Future, Communicating Powerfully to Critical Audiences, and Diversity



of Tomorrow's Engineer. As the process moves along, NSPE understands the importance of engaging and receiving input from the state societies and the Board will seek this engagement in the future when the topics and plan have been developed in more detail. If you have any questions or comments regarding NSPE, please feel free to reach out to me at 402-496-2498 or matt.kruse@LRA-Inc.com.

-Matt Kruse, P.E.,
NSPE North Central Region Director

2019 PECON Planning Committee MSPE's Gary Strack to Chair NSPE 2019 PECON Planning Committee

Gary Strack has accepted the appointment to chair next year's NSPE conference Planning Committee. The event will take place on July 17-21, 2019 at the Kansas City Marriot Downtown in Kansas City. Gary is putting together a team of local volunteers to assist the NSPE staff with ideas of seminar topics, tours and entertainment options.



The Future of Professional Engineering By Adam Stodola, P.E.

"This NSPE report, entitled "The Future of Professional Engineering: Continued Protection of the Public Health, Safety and Welfare Through Professional Engineering Licensure", was developed by a team of volunteers appointed to the NSPE Future of Professional Engineering ("FOPE") Task Force of the National Society
Page 13

of Professional Engineers ("NSPE") from June 2016 to July 2018 and presents a discussion of a range of issues that are expected to impact professional engineers and professional engineering in the coming decades – emerging technologies, industrial exemptions, public policy, engineering education, globalization, alternative

project delivery, the role of engineering technicians/technologists, public sector engagement and other critical issues."

<https://www.nspe.org/resources/the-future-professional-engineering>

NSPE President's Visit to Kansas City

Breakfast with MSPE Western Chapter and KSPE Eastern Chapter

This marked the 55th consecutive year that the NSPE National President has met with the engineering leaders of Kansas City. We are proud that it has become a Kansas City tradition at both the NSPE, MSPE, and KSPE leadership levels. Michael Aitken, this year's NSPE President, visited Kansas City with his wife Pamela. Their visit started with a private dinner with local MSPE and KSPE leadership, Travis Lowe, MSPE's new Executive Director, and Michael Purol, P.E., MSPE State President.

Breakfast with local Kansas City engineering leadership was held at Eggtc in Kansas City, Missouri. Those in attendance included past Western Chapter presidents, current Western Chapter officers, and local engineering firm leaders in the Kansas City area. The breakfast was kicked off by Kyle Roberts, current Western Chapter President, and was followed by a discussion led by Mr. Aitken on updates from NSPE.

Following breakfast Kyle Roberts (Western Chapter President), Tom Greer (Western Chapter President-Elect), Mitch Krysa (State Treasurer), and Michael Purol (State President) accompanied Mr. Aitken and his wife Pamela to the University of Missouri Kansas City (UMKC) School of Computing and Engineering (SCE) to meet with faculty of the SCE program and tour the Linda Hall Library

on UMKC's campus, which is a privately endowed American library of science, engineering and technology and is the largest independently funded public library of science, engineering and technology in North America.

A pizza lunch and lecture was then held at UMKC where Mr. Aitken lectured to an engineering class about the importance of licensure. Approximately 25 students were in attendance.

-Kyle Roberts, P.E., MSPE
Western Chapter President



CHAPTER NEWS



Calendar of Events

November 1, 2018

Ozark Chapter BYOE - Bring Your Own Engineer - 425 Downtown, Springfield, MO
12 pm - 1 pm

November 13, 2018

St. Louis Chapter November Joint Luncheon - Engineering Center, 4359 Lindell St. Louis
11 am - 1 pm



November 15, 2018

Southwest Chapter Meeting - Mythos, 1306 S Rangeline Rd, Joplin, MO 12 pm

December 12-13, 2018

MSPE 15th Annual Fall PDH Days - Capitol Plaza Hotel, Jefferson City, MO

December 13, 2018

MSPE December Joint Luncheon, Engineering Center, 4359 Lindell St. Louis
11:30 am - 1 pm

January 18, 2019

MSPE/EF Executive Committee Meeting - MSPE Educational Foundation Building, Jefferson City, MO 10 am - 3 pm

January 19, 2019

BOD Meeting - MSPE Educational Foundation Building, Jefferson City, MO 10 am - 3 pm

April 6, 2019

MSPE/EF Executive Committee Meeting - MSPE Educational Foundation Building, Jefferson City, MO 10 am - 3 pm

June 17-19, 2019

MSPE 2019 Annual Convention - Camden at the Lake Resort, MO

July 17-21, 2019

NSPE 2019 Annual Conference - Kansas City Marriot Downtown Kansas City, MO

REGISTER NOW!

MSPE'S 15TH ANNUAL

FALL PDH DAYS

DECEMBER 12-13, 2018

Capitol Plaza Hotel
Jefferson City, MO



Offering **15 hours** of PDH programming!

To register, go to: <https://mspe.org/event-3087977/Registration>

Southwest Chapter

Barbecue Benefit



MSPE's Southwest Chapter held their Twenty-Seventh Annual Youth Fund Benefit Barbecue on September 13, 2018 at Christ's Church of Oronogo in Oronogo, Missouri.

This annual event is held to raise scholarship funds for local students who desire to pursue a career in engineering. The barbecue event had a great turnout!



Jefferson City Chapter

Shrimp Feed and Wing Ding



MSPE's Jefferson City Chapter held their Annual Shrimp Feed and Wing Ding Thursday, September 20, 2018 at Memorial Park in Jefferson City, .

A special thanks went out to the Central Missouri Professional Services for sponsoring the drinks and to MECO Engineering for sponsoring the meat!

Central Chapter

Chapter Meeting



MSPE's Central Chapter held a chapter meeting and dinner in Columbia, Missouri on September 18, 2018.

ACEC Missouri's President Bruce Wylie gave a presentation that included the one ballot issue, Missouri Proposition D. He encouraged members to vote yes on Proposition D.



Ozark Chapter

Chapter Lunch Meeting



The MSPE Ozark Chapter held their monthly lunch meeting in Springfield on October 4. MSPE Executive Director Travis Lowe was invited to meet members and presented an update of office operations, as well as plans for the upcoming year. Many members expressed their excitement on the staff's work and look forward to continued engagement.



Rolla Chapter

Missouri Water Law Event

MSPE's Rolla Chapter brought Dr. Richard Elgin, P.S. P.E. to speak to Surveyors, Engineers, and practitioners-students on Thursday, September 20.



Western Chapter

NSPE President's Visit- Dinner hosted by MSPE

MSPE's Western Chapter hosted a dinner for Michael E. Aitken, PE, F.NSPE on September 27, 2018.

Among the topics discussed was planning for the 2019 NSPE National Convention which is scheduled to be held in Kansas City, Missouri from July 17-21, 2019.

The evening was concluded with the joint chapter meeting between the MSPE Western and KSPE Eastern Chapters, which was held at Jack Stack Barbecue in South Kansas City, Missouri. Approximately 60 MSPE and KSPE members were in attendance for the joint meetings. The meeting was kicked off by Kyle Roberts (Western Chapter President) and followed up by Michael Aitken who discussed the emerging threats to licensure across the country.

Michael E. Aitken, P.E., F.NSPE is the 2018-2019 President of NSPE. Aitken received his BS in Mechanical Engineering Technology from the Metropolitan State College in Denver, is registered as a Professional Engineer in 28 states, and has more than 25 years experience in the fields of engineering, project management, property condition inspections, and expert witness testimony. Long active in both NSPE and NSPE-Colorado, Mr. Aitken has been president of NSPE-Colorado and a member of NSPE's Board of Directors, House of
Page 24

Delegates, Budget & Finance Committee, Audit Committee, and PE Conference Task Force. He is currently the Vice President of MEA Consulting Engineers, which he founded with his wife in April 2000.

Sponsors for the event gave contributions to help make this event possible. Those included: HEMCO Laboratory Planning Solutions - this year's premier sponsor; Burns & McDonnell, George Butler Associates, Custom Engineering, Geotechnology, HDR, Lamp Rynearson, Terracon, HNTB, and Transystems.



Chapter Events

MSPE Southwest Chapter
Chapter Meeting

When: Thursday, November 15, 2018

Time: 12:00 PM

Where: Mythos - 1306 S Rangeline Rd, Joplin, MO 64801

Michael Atkinson with Allgeier Martin and Associates will be giving a presentation on the local "Rails to Trails" projects.

MSPE Ozark Chapter Presents:

BYOE

Bring Your Own Engineer

When: Thursday, November 1, 2018 - Noon to 1 pm

Where: 425 Downtown (425 W. Walnut, Springfield, MO)

Why: Listen to a great engineering presentation, earn PDHs, fellowship with other engineers, PLUS get a free lunch!

Speaker: Bruce Wylie, ACEC of Missouri President update on Proposition D (proposed Gas Tax Increase to Appear on November 6 Ballot)

Any member who brings a guest engineer who is a non-member, gets their lunch as well as their guest's lunch paid for by Ozark Chapter! Otherwise, lunch buffet is \$12.00 for members (so bring a guest).

Professional Card Listings



E. Matt Bedinghaus, P.E.
CEO & Chief Engineer

3804 S. Fremont Ave.
Springfield, MO 65804
www.a2vpe.com

417-882-2221 (o)
417-942-8159 (m)
MBedinghaus@a2vpe.com



Civil Engineering
Land Surveying
Construction Testing Labs
Geotechnical Services
GIS Services
Commercial Drone Services

866.866.2741
AndersonEngineeringInc.com
info@andersonengineeringinc.com



BLACK & VEATCH

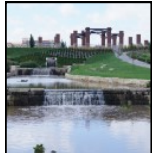
**Kansas City
St. Louis**



burnsmcd.com | Offices Worldwide



creating remarkable solutions for a
higher quality of life



Chesterfield 314.231.0100 | O'Fallon 636.240.2444 gbateam.com

International reach.
Local presence.



Springfield: 417.831.9700
geoengineers.com

From 13 offices
nationwide,
GeoEngineers
crafts geotechnical,
geological,
environmental and
trenchless solutions
for clients worldwide.

GREDELL Engineering Resources, Inc.

ENVIRONMENTAL ENGINEERING LAND-AIR-WATER

Jefferson City, Kansas City and Springfield, Missouri

Since 2001

Engineering Design, Geologic Studies,
Regulatory Compliance and Water Resources

Telephone (Toll Free) (855) 420-3831

E-Mail: Contactus@ger-inc.biz

Visit our Website: www.ger-inc.biz



Ronald E. Hill, P.E.
CEO / CoFounder
(816) 796-2900 ext. 202

HEMCO Corporation
711 S. Powell Road
Independence, MO 64056

ronh@hemcocorp.com
FAX: (816) 796-3333
www.HEMCOcorp.com

Visit: www.HEMCO Corporation.com

TRANSPORTATION
+
WATER
+
GOVERNMENTAL SERVICES
+
LAND DEVELOPMENT
+
ENVIRONMENTAL
+
CONSTRUCTION



▶ HRGREEN.COM

Knapp

ADVISORY GROUP

James C. Knapp, AIF® Managing Partner

www.KnappAdvisory.com
913-544-1509

james.knapp@jpl.com
314-323-7094

Securities offered through LPL Financial, member FINRA/SIPC



- Geotechnical Services
- Environmental Services
- Material Testing Services

PALMERTON & PARRISH, INC.

Springfield, MO
417-864-6000

Branson, MO
417-561-8395
www.ppimo.com

Joplin, MO
417-624-2005

SMITH & CO.
ENGINEERS

901 VINE STREET; P.O. BOX 72
POPLAR BLUFF, MISSOURI 63902
(573) 785-9621 FAX: (573) 785-2651
WWW.SHSMITHCO.COM

-ENGINEERING -SURVEYING -ENVIRONMENTAL -GEOTECHNICAL

We Have Space Available!

Add Your Firm Today!

Call 573-636-4861 or email Rachel at rnincehelser@mspe.org



**Missouri Society of
Professional Engineers**