



The Missouri Engineer

*The official publication of the Missouri Society of Professional Engineers
whose mission is to promote the ethical and competent practice of engineering*

MSPE Votes To Support New NSPE Membership Model

At its June 19th meeting, MSPE's Board of Directors voted to support the National Society of Professional Engineers' proposed new membership model aimed at creating consistent membership services for PE's across the country.

As reported in *The Missouri Engineer* Spring 2017 issue, NSPE's new membership model would offer a consistent dues price for all three-tier chapter, state and national membership across the country AND creates either integrated or non-integrated levels of service that state societies must select by December 31, 2017.

Integrated Partnership

- A unified membership in both the National and State-Chapter offered at a single dues-price point of \$299.
- Discontinuance of the state's current two-tier membership.
- All existing two-tier members will be grandfathered, and may remain state-only members in perpetuity, but states may not offer any new two-tier memberships. States will provide invoicing for grandfathered two-tier members.
- A division of the single price-point

dues will be determined between NSPE and the state society based on service/capacity tiers at the conclusion of the first fiscal year after implementation (anticipated date of June 20, 2019) and every other year thereafter which may be adjusted between regular reviews depending upon changes in state society circumstances.

- NSPE will send dues payments collected from MSPE members to the state on a monthly basis ... which could have a cash flow impact for MSPE.

Non-Integrated Partnership

- Maintain an official cooperative relationship, but all administrative, financial, and operational activities will be separated between the state society and NSPE.
- NSPE would bill three-tier members \$299 but would not share revenue with non-integrated state societies.
- MSPE would bill all members the \$210 state and chapter dues.
- State societies will be responsible for all association administration, marketing and invoicing of dues (at

the state and chapter level) which is similar to how MSPE operates today.

The new membership model is anticipated to go into effect July 1, 2018. In the meantime, NSPE has formed Study Group 2 to work through the implementation phase and MSPE is lucky enough to have President-Elect Michael Puro, P.E. serving on this committee. In addition, MSPE's Membership Coordinator, Stacey Meyer has been named to Study Group 2's Database Committee.

Whichever level of service MSPE's Board of Directors selects, virtually all Missouri members, with the exception of those granted life membership status will be impacted. However, no matter which partnership is selected, MSPE's State Membership Committee Chair Jason Sommerer, P.E., is quick to assure members a robust state level of membership service and database management will continue to support the chapter's efforts by:

- Delivering membership reports for chapters to conduct retention efforts for delinquent or dropped members
- Providing individual member

- customer service and assistance.
- Offering membership lists and various reports for the Executive Committee, Board of Directors and Chapter leadership's use.
- Continuing invoicing for the grandfathered two-tier members.

INSIDE

Incoming & Outgoing Presidents Messages, Pages 2 & 3

PE Day Celebration, Page 4

Government Relations Activities, Page 5

80th Anniversary & Annual Convention, Pages 6, 7, 8, 9

New Members and In Memoriam, Page 10



NSPE President-Elect Tom Roberts, P.E., installs MSPE's 2017-2018 Executive Committee at the Annual Banquet event. Leading the society in the upcoming year are (from left to right) Ron Black, P.E., President; Michael Puro, P.E., President-Elect; Bob Becnel, P.E., Vice President; Mitch Krysa, P.E., Treasurer, Matt Bedinghaus, P.E., Immediate Past President; John Riediger, P.E., Board of Director Representative; Kelsie Clark, P.E., Board of Director Representative, and Matt Weber, P.E., Young Engineer Representative.

2017-18 President's Message:

Be Engaged! in 2017-18

By Ron Black, P.E., PMP
MSPE President



Although I have just started into what promises to be a fun and exciting year as your President, I would like to thank those that have come before me, our staff, and other officers of this great organization.

Without their hard work and sound direction, MSPE would not be in the position that we are in.

Some other state societies are not so fortunate. This is one of the reasons that NSPE has decided to develop a new membership model for all states. (See Page 1.) Three-tier member dues are allocated to provide a consistent level of member services for all members. I would encourage you to read, understand, and direct any questions you may have to chapter or state leadership. This is an important time for our organization and this is an important issue. Be informed.

The health of both NSPE and MSPE is very good. We are thriving! I attended our MSPE Convention at Old Kinderhook and we had a great time connecting for informative and interesting PDH sessions; forward-focused Board meetings; and family fun times. We were even able to squeeze in a round of golf! Likewise the NSPE PECON17 convention in Atlanta was also a great time. We had six representatives from MSPE (Stacey Meyer, Gary Strack, Breck Washam, Matt Bedinghaus, Ross Kassman, and me). My favorite part of this convention was the networking with other state societies to

hear about what they are doing to engage their members. It was also eye-opening to hear about the attack on licensure around the country. MSPE/NSPE is the only organization that protects our interests in the governmental arena. It's what they do...and do very well.

We also have a number of opportunities to address this year. Our MSPE leadership will be focused on some significant blue chips.

- NSPE Membership Model - Michael Puro, P.E., is our North Central Region representative working with other regions to provide input and feedback on implementation of the new model. Now that our NSPE House of Delegates has approved the model, successful implementation will be vital to our organization.
- Succession Planning - We are developing a committee to review MSPE leadership and direction going forward to evaluate structure and support of our organization.
- Budget - Our executive committee has been reviewing our financial health, budget process, and approach to both Operations and Maintenance (O&M) and Capital expenses. Bob Becnel, P.E., has been working with staff to develop a five-year roadmap.
- Membership - Our Membership Committee, with Jason Sommerer, P.E. and Stacey Meyer leading the charge, have a great team of hard-working MSPE members from across the state. The committee is focused on developing new members and retention.

- Focus 85 - David Howe, P.E., has developed his committee to focus on strategy and tools to help MSPE as we move forward toward our 85th birthday.

While these aren't the only committees or initiatives that we are actively working, hopefully this gives you a flavor of what's going on. If you have questions, suggestions, or comments, please feel free to contact me directly at rblack@ameren.com.

Be Engaged! While it may be cliché to say "you get out of it what you put into it" I think that we can all agree that managing a successful organization takes time and effort. We don't have a large staff and most of our active members have full time jobs and families, but working together we can do great things. I'm asking you to consider joining a committee, attending a chapter event, or volunteering. As Past President, Matt Bedinghaus, P.E., would say, "It's What We Do." I would agree!

MSPE 2017 President's Workshop



- Friday, September 22, 2017
- 10 a.m. - 3 p.m., MSPE Educational Foundation Building
- Registration \$20 (covers breaks, lunch, handouts, MSPE logo item)
- Registration Deadline: Friday, September 15, 2017
- Especially for: Chapter Presidents and Chapter Officers
- ALL members welcome to attend

Registration/RSVP Form

Registration Fee \$20.00

Name: _____

Chapter: _____

MSPE Position: (choose one)

- State Officer
- State Board of Director Member
- Chapter President or Other Officer
- Member

Payment: Check Cash

Please make checks payable to MSPE and mail to MSPE, 200 E. McCarty Street, Suite 200, Jefferson City, Missouri, 65101. If paying in cash, please return RSVP by email to cbishop@mspe.org noting cash payment to be made at the event.

Registration/RSVP Deadline: Friday, September 15, 2017

The Missouri Engineer

Publisher: Bruce A. Wylie

Editor: Cherie L. Bishop

The Missouri Engineer, is published semi-monthly by the Missouri Society of Professional Engineers, 200 E. McCarty St., Suite 200, Jefferson City, MO 65101. Subscription fees are \$1 per year to MSPE members and \$12 per year to non-members.

Opinions expressed by authors herein are not necessarily those of the Society. As a matter of policy, MSPE does not endorse any item, product or advertisement. Correspondence regarding advertising, articles and changes of address should be mailed to:

The Missouri Engineer
c/o Cherie Bishop, Editor
200 E. McCarty Street, Suite 200
Jefferson City, MO 65101
Phone: 573-636-6949
FAX: 573-636-5475
www.mspe.org

MSPE Past President's Year In Review: Highlights Of "It's What We Do"

By Matt Bedinghaus, P.E.
MSPE 2016-2017 President



My year as MSPE President was very enlightening. It is amazing to witness what all it takes to operate MSPE as it is done. The Chapters, Board of Directors, Executive Committee, State & Chapter Committees are working hard to meet, have programs, encourage each other and broaden our effect(s) on communities, businesses, government, etc. Whether you did a lot or a little, I thank you all very much!

MEMBERSHIP

I felt that our major goal this year should be recruiting new and maintaining our existing membership. Jason Sommerer, PE led our Membership Committee with major assistance from MSPE Membership Coordinator Stacey Meyer. Their committee was the recruiting voice at each chapter meeting getting the word out about how vital it is to invite new engineers to join. They also disseminated the dropped lists for follow up calls to be made. We all owe a big thank you to Jason and Stacey for their work.

MARKETING MSPE

Visionworks, the firm helping us with our marketing efforts, developed a new brochure which touts the benefits of being a PE and a MSPE Member. These will be available soon to help chapters and individual members with recruitment efforts to increase our member numbers.

FALL PDH DAYS

Our Fall PDH Days were very successful, due to hard work from Michael Purol, P.E. and MSPE Director of Operations Cherie Bishop. This event requires an enormous amount of work from our PDH Task Force and many volunteer presenters, but the pay-off to MSPE comes back as a well-attended event

that's a big revenue producer for the society.

E-COMMERCE

MSPE also got its "toe" into e-commerce by offering on-line registration for the Annual Convention. Folks could register on-line and/or purchase an MSPE 80th commemorative shirt at the same time then pay by credit card in just a few minutes with just a few keystrokes. This was all possible due to the expertise and effort of Sam Samarasinghe, PE of the Western Chapter who also makes on-line registration possible for every Western Chapter monthly meeting. I'm very grateful to Sam, he is the epitome of "stepping and getting it done" and a model example of "It's What We Do"

80TH ANNIVERSARY & ANNUAL CONVENTION

In June, we celebrated MSPE's 80th anniversary during the annual convention at The Lodge at Old Kinderhook in Camdenton. Convention Chair Rachel Goeke, P.E. and her committee did a great job of planning and implementing

fun events and PDH Sessions giving everyone memorable event. Rachel drafted several volunteers from each chapter in order to spread the work around and involve as many members as wanted to participate. This group started their work last September and utilized Google Docs giving easy access to all the planning documents. Their monthly phone conference calls were always efficient and productive which paid off in everyone having a great time. I greatly appreciate Rachel and her committee's hard work.

SUPPORTING NSPE'S NEW MEMBERSHIP MODEL

The culmination of my year ended with our Board of Director's vote to support the new NSPE Membership Model aimed at providing service and support to the state societies in a consistent manner. The proposed uniform \$299 annual membership fee and national assistance should be better for MSPE overall - assuming everything works as proposed. What a great experience it was

to lead MSPE and travel all over the state to chapter meetings. I am so impressed at everyone's hard work and dedication to MSPE, I shouldn't be surprised -

afterall, **"It's What We Do!"**
So how are you planning to "Be Engaged" with MSPE President Ron Black, P.E. this next year?



MSPE's 2017-2018 Incoming President Ron Black, P.E. presents outgoing 2016-2017 President Matt Bedinghaus, P.E. with a plaque containing his very own gavel to mark his year of service to the society. (Photo courtesy of Dawn Hill).

14th Annual

Fall PDH Days



Save The Date

December 5 and 6, 2017
Capitol Plaza Hotel
415 West McCarty St., Jefferson City, MO

- **15 PDH Credits in 2 days**
- **Lunch and breaks included in registration fee**
- **Lodging \$95 plus tax until November 17, 2017**
- **To make hotel reservations call: 573-635-1234 or 1-800-338-8088. Be sure to indicate you're attending MSPE's Fall PDH Days event!**
- **Online reservations: <https://reservations.travelclick.com/13414?groupID=1596036>**



**Missouri Society of
Professional Engineers**

Proclamations Mark MSPE's 2017 PE Day Celebration



PE Day in Missouri was officially marked with proclamations from Governor Eric Greitens and the mayors of Cape Girardeau and Jefferson City. Celebrated on August 2, the mostly virtual event was started in 2016 to give recognition to licensed PEs and spotlight the many ways they make a difference in our daily lives.

NSPE reported nationwide 16 state and local governments issued official proclamations in recognition of PE Day along with the following statistics on the use of the #LicensedPEDay hashtag:

Twitter

1,700 tweets among 829 contributors including tweets from South Africa, Australia, Dubai, the UK, and Mumbai.

Instagram

164 posts with the hashtag

Facebook

2,545 comments, shares, photo views, etc. plus 112 uses of the new Facebook "PE Day" profile frame.

LinkedIn

Over 250 posts with the hashtag.


PE Day was first launched in 2016 to celebrate and give recognition to licensed PE's. The first Wednesday of August was chosen to coincide with the anniversary of the first professional engineering license being issued to Charles Bellamy in Wyoming in 1907. Mark your calendars for next year's event on Wednesday, August 1, 2018.



Jefferson City Chapter President (and Young Engineer rep on the Executive Committee) Matt Weber, P.E. took a "selfie" with the PE Day Proclamation signed by Jefferson City Mayor Carrie Tergin.



Cape Girardeau Mayor Harry Rediger issued a proclamation at the July city council meeting naming Aug. 2 as "Professional Engineers Day." Receiving the proclamation from the mayor are (left to right) City Engineer Casey Brunke, Alliance Water Utilities Engineer Erica Bogenpohl, Assistant Public Works Director Stan Polivick, Dan Klapproth of Koehler Engineering, and City Manager Scott Meyer.


Office of the Governor
State of Missouri

Proclamation

WHEREAS, licensed professional engineers combine their creative genius with practical application to make a world of difference by applying scientific knowledge and technical skills in ambitious and innovative ways while holding paramount the public health, safety, and welfare; and

WHEREAS, Missouri's licensed professional engineers help change the state and world by testing limits, defying the norms, and taking risks to make the best use of the Earth's precious resources; and

WHEREAS, it is both important and appropriate to salute the licensed professional engineers' commitment to turning ideas into reality by recognizing their many accomplishments and the positive impact they make on our quality of life; and

WHEREAS, the National Society of Professional Engineers was founded in 1934 and represents more than 31,000 licensed professional engineers and those on the path to licensure who show the highest level of dedication to protecting the public health, safety, and welfare throughout all 50 states and United States territories; and


WHEREAS, on August 2, 2017, the Missouri Society of Professional Engineers, in conjunction with the National Society of Professional Engineers, will celebrate Professional Engineers Day.


NOW THEREFORE, I, Eric R. Greitens, GOVERNOR OF THE STATE OF MISSOURI, do hereby proclaim August 2, 2017, to be


PROFESSIONAL ENGINEERS DAY

in Missouri, and urge the citizens of our great state to recognize the important role professional engineers play in the quality of our daily lives and advancing our future.

IN TESTIMONY WHEREOF, I have hereunto set my hand and caused to be affixed the Great Seal of the State of Missouri, in the City of Jefferson, this 28th day of July 2017.


Eric R. Greitens
Governor


Attest: 
Jay Ashcraft
Secretary of State



Fall P.E. Ceremony Set

MSPEs' 2017 Fall P.E. Ceremony will be held at 1:00 p.m. Saturday, September 30, 2017 at the Capitol Rotunda in Jefferson City to recognize Missouri's newly registered professional engineers. Keynote Speaker for the event is Missouri Department of Transportation Assistant Chief Engineer Kathryn (Kathy) Harvey. P.E. Assistant Chief Engineer.

Additional information about the Fall P.E. Ceremony can be found on MSPE's website (www.mspe.org) or by contacting MSPE Membership Coordinator Stacey Meyer at smeyer@mspe.org or 573-636-4861.



Harvey



Government Relations Activities: Hot Topic for MSPE This Summer

MSPE's government relations activities are still in full-swing even though the legislature isn't in session. So far this summer, MSPE has been following the Missouri 21st Century Transportation and the Boards and Commissions task forces appointed by Governor Eric Greitens as well as taking steps to reinvigorate the society's Past President's Committee on Appointments.

The primary aim at reviving the special committee on appointments is to identify members willing to be appointed to the Missouri Board for Architects, Professional Engineers, Professional Land Surveyors and Professional Landscape Architects. Many of the current board members are serving expired terms - including four on the Engineering Division - and the governor has indicated he's ready to start making new appointments.

Executive Director Bruce Wylie attended the Missouri 21st Century Transportation Task Force inaugural meeting in Jefferson City. Notable names appointed to this

task force are MSPE member Gretchen Ivy, P.E. of HNTB and Dale Williams, P.E., from the Missouri Asphalt Pavement Association. A complete list of Task Force members is listed online at <http://www.senate.mo.gov/mttf/>. This Task Force is charged with creating a proposal for funding transportation needs that will be introduced in January 2018.

In its early meetings, Missouri Department of Transportation Director Patrick McKenna discussed the transportation landscape. Now, the task force is meeting monthly in different parts of the state with different "themes" for each. The expected format for each meeting will include: Introductions, MoDOT Overview, Informational Presentations, Area Transportation System Update, Public Testimony, Members' Discussion.

Future Meeting Dates/Places/Topics are planned for:

Sept. 20, 2017, 1 p.m., Kirksville: The Future of Transportation - beyond roads and bridges (other modes, transit, etc.)

Oct. 18, 2017, 1 p.m., St. Louis: AASHTO overview of state and federal infrastructure activity; traffic safety

Nov. 15, 2017, 1 p.m., Cape Girardeau Working Session, Informational topic.

Dec. 13, 2017, 1 p.m., Columbia Wrap up and working session.

MSPE members are strongly encouraged to attend the meetings and testify.

Created by Executive Order in April, the task force on Boards and Commissions was formed to evaluate the purpose and results of each existing board and commission, determine its effectiveness and identify opportunities to eliminate, consolidate, or modify. Recommendations are due no later than October 31, 2017.

Most of the input to the task force has been from the various boards' staffs. MSPE has been monitoring the proceedings through its contacts with our registration board. At MoAPEPLSPLA's request, MSPE did issue a letter of support to keep the Geologists Registration Board intact since it mirrors MoAPEPLSPLA's

mission of protecting public health, safety and welfare through examination and registration and is self-sustaining.

At the society's August Executive Committee meeting, Past President Kevin Skibiski, P.E., who chairs the Engineering Division of Registration Board, reported when RSMO Chapter 327 statute changes were made in 2014 to update the practice act, the enabling rules were submitted, but did not get reviewed by the previous administration, and were sent back to the Board in December 2016. Because of this, the new administration is requiring all statutes and rules be reviewed, and public hearings on proposed changes held to take any comments. All boards and commissions have been told to remove unnecessary rule language including words such as "shall" or "must" where applicable. MoAPEPLSPLA will re-submit the proposed rules with the requested editing while still conveying the intent of RSMo Chapter 327 and the Board Rules.

MSPE 2018 ANNUAL CONVENTION JUNE 17-20

Venue Camden on the Lake Resort, 2359 Bittersweet Road, Lake Ozark, MO 65049

Adjacent to Toad Cove Entertainment Complex at the 7-mile marker on the Lake of the Ozarks.

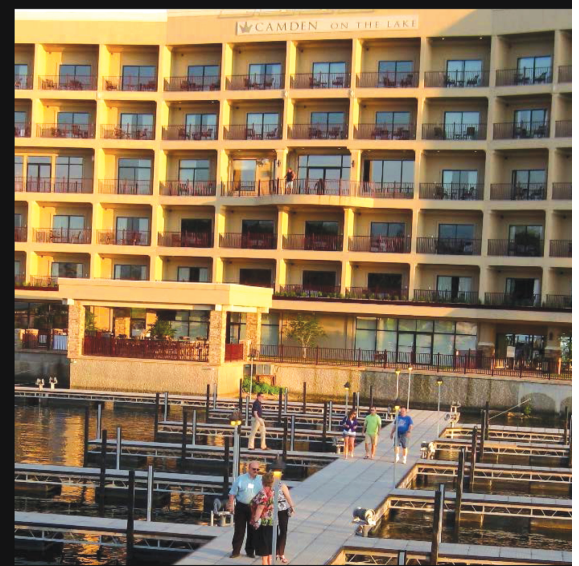
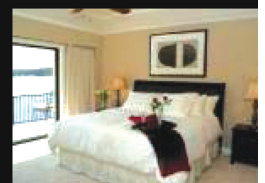
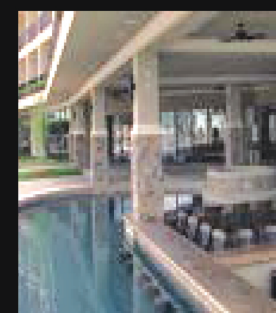
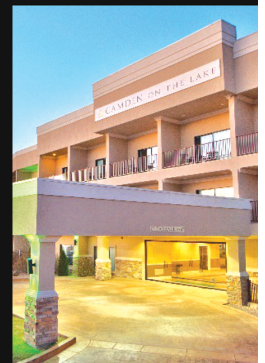
Phone: 573-375-5045 Website: www.camdenonthelake.com

Lodging \$149 plus tax per night for Deluxe King Suite, Deluxe Double Suite or One Bedroom King Grand Suites. Check-in is 4 pm and check out is 11 am

Reservations Online at camdenonthelake.com or call 573-375-5045. ID & Password: **MSPE 0618**

Register early! Friday, May 18, 2018 is the deadline to book your room!

Hotel Amenities Wi-Fi and Cable, Spa 54 and beauty salon, Casual up-scale dining, Fitness Center, Outdoor Pool with Swim-up Bar, Hot Tub, Outdoor deck and waterfall, Toad Cove Entertainment Complex, Retail Shops, Over 100 boat slips available to visitors, Boat & Wave Rentals, Parasailing (seasonal), Full-service fishing charters, Water Taxi Service and more.



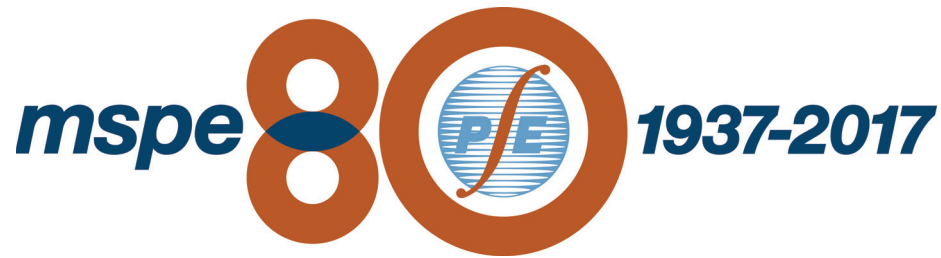
PRELIMINARY SCHEDULE OF EVENTS

Society Business Executive Committee, Practice Division, Committee & Board Of Directors' Meetings

Family & Social Events Golf Scramble, Welcome Event, Annual Banquet, President's Reception, Special Spouse & Kids Programs and more.

Professional Development Dual PDH Sessions; Tour

MSPE: A Brief History



Eight Decades 1937 - 2017




January 9, 1937 the Missouri Society of Professional Engineers is set up to establish laws that regulate the improper practice of engineering. MSPE adopts a Code of Ethics. Chapters begin forming in Rolla, Jeff City, Joplin & Macon.

Aug 4, 1941 Gov. Forrest C. Donnell signed the Registration Bill setting up a seven person board to issue licenses for Professional Engineers and Architects. In 1948 Clifford Wood is hired as MSPE's first full-time Executive Director.

In 1954 Paul N Doll, P.E., is hired as MSPE's second full-time Executive Director. In 1954 an Education Committee was established to handle scholarships. In 1956 Garvin H Dyer, PE, is the first MSPE member to serve as president of NSPE.

MSPE's first Student Chapter is organized at St Louis University in 1961. In 1969 MSPE's Educational Foundation was incorporated to provide financial aid to college students enrolled in engineering.


Office of the Governor
State of Missouri

Proclamation

WHEREAS, it is both fitting and proper to acknowledge the milestones of professional associations that impact our daily lives by promoting the highest standards of practice in a learned profession; and

WHEREAS, 2017 marks the 80th anniversary of the founding of the Missouri Society of Professional Engineers, which will be celebrated at the society's annual convention on June 18-21 at The Lodge at Old Kinderhook in Camdenton, Missouri; and

WHEREAS, the Missouri Society of Professional Engineers was founded on January 9, 1937 in Rolla, Missouri when engineers met in an open forum to discuss a proposed registration bill for architects and engineers, and permanently organized on July 19, 1937 to protect all Missouri citizens from acts of incompetent and unethical practice; and

WHEREAS, the Missouri Society of Professional Engineers is the only statewide engineering society to represent all disciplines and practice areas; promote the protection of public health, safety, and welfare by only ethical and competent means of professional engineering practice; advocate licensure; and enhance the image and well-being of its members; and

WHEREAS, it is important to recognize the Missouri Society of Professional Engineers has never lost sight of its founding principles and primary purpose "to promote proper and adequate legislation for the protection of engineers and of the public against irresponsible and unethical practices;" and


WHEREAS, the Missouri Society of Professional Engineers has made invaluable contributions to both the citizens of Missouri and the engineering profession in assisting the creation of the Missouri Board for Architects, Professional Engineers, Professional Land Surveyors, and Professional Landscape Architects to oversee the registration law, developing a Code of Professional Conduct, and requiring professional development to ensure the profession exhibits a continuing level of competency to protect the citizens of Missouri.

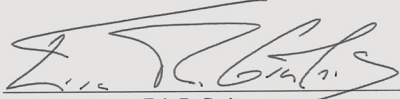
NOW THEREFORE, I, Eric R. Greitens, GOVERNOR OF THE STATE OF MISSOURI, do hereby recognize the 80th anniversary of


THE MISSOURI SOCIETY OF PROFESSIONAL ENGINEERS

and urge the citizens of Missouri to recognize the role professional engineers play in protecting the quality of our daily lives and developing our future.

IN TESTIMONY WHEREOF, I have hereunto set my hand and caused to be affixed the Great Seal of the State of Missouri, in the City of Jefferson, this 9th day of June, 2017.




Eric R. Greitens
Governor

Attest:

Secretary of State

Paul E Jobe is hired in 1976 as MSPE's third full-time Executive Director. In 1977 MSPE's goals and objectives were officially adopted. MSPE's Political Action Committee is organized in 1979.

In 1983 MSPE initiates a ceremony present certificates to newly registered PE's in cooperation with the Missouri Registration Board. MATHCOUNTS also starts the same year in Missouri

MSPE moves into its new headquarters building on February 29, 1996. A special dedication ceremony was held on May 3, 1996. Bruce Wylie becomes the society's fourth Executive Director on July 1, 1997.

MSPE's unveils its Hall of Fame in 2000 to recognize members and "honorary members" that set high standards for others to emulate. In 2004, MSPE started Fall PDH Days to meet the mandatory PDH requirements.

In 2012, Central Chapter member Bart Korman is the first P.E. elected to the Missouri legislature. MSPE celebrates its 80th Anniversary at the Lodge at Old Kinderhook in June 2017.

mspe **80** **1937-2017**
It's what we do
 PROTECT | ENHANCE | VOLUNTEER

MSPE 2017 Annual Convention Awards

Hall of Fame Recipients



Josephine L. Emerick, P.E. (above, left) and Kevin C. Skibiski, P.E., P.L.S. (above, right) were inducted into MSPE's Hall of Fame - the highest honor bestowed upon an MSPE member. Both Emerick and Skibiski have served at the chapter, state and national levels of the society as well as served on the Engineering Division of the Missouri Board for Architects, Professional Engineers, Professional Land Surveyors and Professional Landscape Architects. Each also has a lengthy list of professional and community service activities and accomplishments. The duos names are engraved on a perpetual plaque that is on display in MSPE's Educational Foundation Building. The pair each received a framed certificate honoring their Hall of Fame distinction.

MSPE PEPP Distinguished Service Awardees

Larry Hendren, P.E. (left) and David Bennett, P.E. (right) accept Distinguished Service Award plaques from PEPP Awards Vice Chair Tom Greer, E.I. recognizing their outstanding contribution to the advancement and recognition of the role private practice engineers play in serving the public interest.



PEPP Professional Development Award



Tom Gredell, P.E. and Bruce Dawson, P.E. of Gredell Engineering Resources, Inc. accept the MSPE Professional Engineers in Private Practice Development Award given to a firm that has made outstanding contributions to the advance and improvement of the engineering professional through its employment policies and practices.

Young Engineer



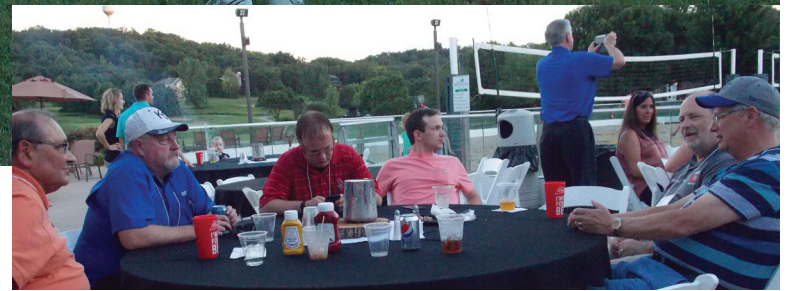
Brandon R. Parrish, P.E. receives MSPE's 2017 Young Engineer of the Year award from President Matt Bedinghouse, P.E. He is Vice President of Palmerton & Parrish, Inc. consulting engineering firm located in Springfield, Missouri and also serves as the Geotechnical Engineering Manager. Parrish began working for the firm at age 16 as a part-time employee, he became a full-time employee in 2006 after receiving his B.S. and Master degrees in Civil Engineering (Geotechnical Emphasis) from the University of Missouri. Parrish's MSPE affiliation began in 2006 with Ozark Chapter. From 2009-2016, he served in all officer positions from chapter director through president and has been active in the chapter's nationally famous Shrimp Feed annually while also volunteering for MATHCOUNTS, the local Discover Engineers Day and Model Bridge STEM events. At the state level, Parrish has served on the Annual Convention Committee as a member and chair and also chaired the Publications committee.



It's what we do
PROTECT | ENHANCE | VOLUNTEER



Backyard games and family BBQ started MSPE's 80th Annual Convention opened with a family BBQ, backyard games and a washers tournament.



Ron Black, P.E. (at left) presides over the Incoming President's session introducing members to the 2017-18 theme "Be Engaged" At right, NSPE President-Elect Tom Roberts, P.E. talks about the new membership model proposed by NSPE with convention attendees at MSPE's Board meeting

Representatives from Missouri's seven engineering programs (shown at right) participate on a panel to discuss "The State of Engineering Education in Missouri." Participants were Dr. Elizabeth Lobo, UMC College of Engineering; Dr. Matthew Pierson, P.E., Missouri State University Cooperative Engineering Program; Dr. Joseph A. O'Sullivan, University of Missouri-St. Louis/Washington University Joint Undergraduate Engineering program, Dr. Stephen Raper, Missouri University of Science and Technology, Dr. Michelle Sabick, Parks College of Engineering, Aviation and Technology at Saint Louis University and Dr. Kevin Z. Truman, School of Computing and Engineering at the University of Missouri-Kansas City, which was moderated by MSPE President Matt Bedinghaus, P.E.



Outgoing MSPE President Matt Bedinghaus, P.E. (photo at left on the far right) and Incoming MSPE President Ron Black, P.E. (photo at left in the center) surprise First Lady Beth Bedinghaus with an inscribed clock. Attendees at the Annual Banquet (photo at right) applaud MSPE's 2017 Award Winners.



Convention Sponsors

MSPE extends its sincere thanks and appreciation to the following firms that provided generous sponsorships for the society's 80th Annual Convention.

Platinum Sponsors

Anderson Engineering, Inc.
www.aeincmo.com
Burns & McDonnell
www.burnsmcd.com
Palmerton & Parrish, Inc.
www.ppimo.com

Gold Sponsors

A2V Partners, LLC
www.a2vpe.com
Allgeier, Martin and Associates
www.amce.com

HNTB Corporation
www.hntb.com
Shafer, Kline & Warren, Inc.
www.skw-inc.com

Silver Sponsor

Terracon Consultants, Inc.
www.terracon.com

Event Sponsors

Ameren
www.ameren.com/missouri
Empire District Electric Company
www.empiredistrict.com
Engineering Surveys & Services
www.ess-inc.com
MSPE St. Louis Chapter

PDH Sponsors

Black & Veatch
www.bv.com
Crawford, Murphy & Tilly, Inc.
www.cmtengr.com
HDR, Inc.
www.hdrinc.com
MSPE Northeast Chapter
MSPE Western Chapter
www.mspe-wc.org
Poepping Stone Bach & Associates, Inc.
www.psba.com
MSPE P.E.'s in Construction
MSPE P.E.'s in Industry
TransSystems Corporation
www.transystems.com

Golf Sponsor

MSPE P.E.'s in Private Practice

Friends of MSPE

Crane Agency
www.craneagency.com
Geotechnology
www.geotechnology.com
Gredell Engineering Resources, Inc.
www.ger-inc.biz
Knapp Advisory Group, Inc.
www.knappadvisory.com
Kuhlmann design Group.
www.kdginc.com
Midwest Environmental Consultants
www.mecpc.com
MSPE Ozark Chapter
MSPE Ozark Chapter PEPP
Springfield, Missouri
MSPE Southeast Chapter
MSPE Southwest Chapter

Professional Card Listings

 <p>"Your Partners In Electrical Engineering"</p> <p>E. Matt Bedinghaus, P.E. CEO & Chief Engineer</p> <p>3804 S. Fremont Ave. Springfield, MO 65804 www.a2vpe.com</p> <p>417-882-2221 (o) 417-942-8159 (m) MBedinghaus@a2vpe.com</p>	 <p>creating remarkable solutions for a higher quality of life</p>  <p>Chesterfield 314.231.0100 O'Fallon 636.240.2444 gbateam.com</p>	 <p>Ronald E. Hill, P.E. CEO / CoFounder (816) 796-2900 ext. 202</p> <p>HEMCO Corporation 711 S. Powell Road Independence, MO 64056</p> <p>ronh@hemcocorp.com FAX: (816) 796-3333 www.HEMCOcorp.com</p> <p>Visit: www.HEMCO Corporation.com</p>	 <p>• Geotechnical Services • Environmental Services • Material Testing Services</p> <p>PALMERTON & PARRISH, INC.</p> <p>Springfield, MO 417-864-6000 Branson, MO 417-561-8395 Joplin, MO 417-824-2005 www.ppimo.com</p>
 <p>ENGINEERS • SURVEYORS • LABORATORIES • DRILLING EMPLOYEE OWNED - SERVING THE AREA SINCE 1954 - LICENSED IN 37 STATES</p> <p>2045 W Woodland Springfield, MO 65807 417-966-2741 aeinc@aeincmo.com</p> <p>811 E Third Street Joplin, MO 64801 417-782-7399 www.aeincmo.com</p>	<p>International reach. Local presence.</p>  <p>Earth Science + Technology</p> <p>Springfield: 417.831.9700 geoengineers.com</p> <p>From 13 offices nationwide, GeoEngineers crafts geotechnical, geological, environmental and trenchless solutions for clients worldwide.</p>	 <p>TRANSPORTATION + WATER + GOVERNMENTAL SERVICES + LAND DEVELOPMENT + ENVIRONMENTAL + CONSTRUCTION</p> <p>HRGREEN.COM</p>	 <p>Forming Partnerships. Delivering Results.</p> <p>SHAFER, KLINE & WARREN, INC. Engineers Surveyors www.skw-inc.com</p>
 <p>BLACK & VEATCH</p>	<p>GREDELL Engineering Resources, Inc. ENVIRONMENTAL ENGINEERING LAND-AIR-WATER Jefferson City, Kansas City and Springfield, Missouri</p> <p>Since 2001</p> <p>Engineering Design, Geologic Studies, Regulatory Compliance and Water Resources</p> <p>Telephone (Toll Free) (855) 420-3831 E-Mail: Contactus@ger-inc.biz Visit our Website: www.ger-inc.biz</p>	 <p>James C. Knapp, AIF® Managing Partner</p> <p>www.KnappAdvisory.com 913-544-1509 james.knapp@jpl.com 314-323-7094</p> <p>Securities offered through LPL Financial, member FINRA/SIPC</p>	 <p>901 VINE STREET, P.O. BOX 72 POPLAR BLUFF, MISSOURI 63902 (573) 785-9621 FAX: (573) 785-2651 WWW.SHSMITHCO.COM</p> <p>-ENGINEERING -SURVEYING -ENVIRONMENTAL -GEOTECHNICAL</p>
<p>Kansas City St. Louis</p>  <p>BURNS & MCDONNELL</p> <p>burnsmcd.com Offices Worldwide</p>			 <p>(913) 599 6886 terracon.com</p> <p>Environmental • Facilities • Geotechnical • Materials</p>

Add Your Firm To The Professional Card Listings, Today

For Placement Contact The Missouri Engineer Editor Cherie Bishop at 573-636-6949 or cbishop@mspe.org

Welcome New Members

MSPE welcomes the following members who joined or re-joined the society

CENTRAL CHAPTER

Ryan Fuller, P.E.
Shafer Kline & Warren, Inc.
3200 Penn Terrace
Columbia, MO 65202

NORTHWEST CHAPTER

Jesse Spooner, E.I.
ICM, Inc.

2811 S 11th St. Rd
St. Joseph, MO 64503

OZARK CHAPTER

Todd Chandler P.E.

Olsson Associates
500 W. Main St. Suite 304
Branson, MO 65616

Elliot Duenow, E.I.*

Cook Flatt Stroble Engineers
2101 W Chesterfield Suite B201
Springfield, MO 65807

Matthew Filice, P.E.*

City of Branson
110 W Maddox St. Suite 310
Branson, MO 65616

Naomi Fisher, P.E.

Malone Finkle Eckhardt & Collins
3333 E Battlefield Rd Suite 1000
Springfield, MO 65804

Keith Francis, P.E.*

City of Branson
110 W Maddox St. Suite 200
Branson, MO 65616

Jason Sivils, P.E.

Great River Engineering
2826 S. Ingram Mill Rd
Springfield, MO 65804

ST. LOUIS CHAPTER

Joel Birke, P.E.

Burns & McDonnell
425 S Mills Rd Suite 300
Chesterfield, MO 63017

Matthew Fields, E.I.

Oates Associates, Inc.
720 Olive Suite 700
St. Louis, MO 63101

WESTERN CHAPTER

Matthew Fischer, P.E.

Burns & McDonnell
9450 Ward Parkway
Kansas City, MO 64114

Michael Laney, P.E.

Terracon
13910 W 69th Terr
Lenexa, KS 66215

Phillip Parra P.E.

WL Cassell & Associates, Inc.
1600 Baltimore Ste. 300
Kansas City, MO 64108

Asterisk () indicates the member re-joined*



2016-17 Membership Committee Reviews Events, Proposes New Ideas

Jason Sommerer, P.E. (left) lists ideas for the society's membership committee to consider in 2017-18 during their committee meeting at MSPE's 80th Annual Convention. Above, Sommerer leads discussions on the committee's accomplishments with current and incoming committee members along with interested chapter representatives and MSPE Executive Director Bruce Wylie and Membership Coordinator Stacey Meyer. 2017-2018's Membership Committee will continue to be chaired by Sommerer.

Sustaining Organizations

ABNA Engineering

St. Louis, MO

Allgeier, Martin & Associates

Joplin, MO

Allstate Consultants

Columbia, MO

Ameren

St. Louis, MO

American Concrete Paving Association

Overland Park, KS

Anderson Engineering

Springfield, MO

Black & Veatch

Kansas City & St. Louis, MO

Burns & McDonnell

St. Louis, MO

Cook, Flatt & Strobel

Topeka, KS

Gaskin Hill Norcross, Inc.

Springfield, MO

George Butler Associates

Lenexa, KS

Gibbens Drake Scott

Raytown, MO

GREDELL Engineering Resources, Inc.

Jefferson City, MO

Holmes Murphy

Overland Park, KS

Horner & Shifrin, Inc.

St. Louis, MO

Kuhlmann design Group

St. Louis, MO

Lockton Companies

Kansas City, MO

Palmerton & Parrish

Springfield, MO

Scurlock Industries

Springfield, MO

Shafer, Kline & Warren

Overland Park, KS

Strickland Engineering

Jackson, MO

The Piker-Kulesa Group & RBC Wealth Management

Leawood, KS

Walter P. Moore & Associates

Kansas City, MO

In Memoriam

MSPE is saddened to report the recent passing of two of its members.

Paul J. Adams, Jr., P.E. of Western Chapter passed away August 14, 2017. Mr. Adams joined the society in January 1961. He is best remembered as the Former CEO & Chairman of Black & Veatch.

William "Bill" Plank, P.E. of the Ozark Chapter died July 22, 2017. He was a member of MSPE since November 1989.

The society also recognizes the loss of four more members which the staff recently received notification of their death.

Jim S. Noel, P.E. of Western Chapter passed away on June 8, 2016. He was a life member of the society joining in March 1956.

Joseph H. Senne, P.E. of Rolla Chapter died on December 20, 2016. He had been of member of MSPE since June 1965 receiving life membership status in June 2005

Martin P. Walsch, Jr., P.E. of St. Louis Chapter passed on May 27, 2016. He joined MSPE in May 1963 and was a life member at the time of his death.

John M. White, P.E. passed away on November 27, 2016. A life member in the St. Louis Chapter, he joined the society in March 1959.