



The Missouri Engineer

The official publication of the Missouri Society of Professional Engineers
whose mission is to promote the ethical and competent practice of engineering

INSIDE:

Upcoming Board Meeting, Page 3

Possible Priority Legislation, Page 4

More Fall PDH Days, Page 4 and 5

Educational Foundation Appeal, Page 6

New Members & Sustaining Organization Listings, Page 8

MSPE Is 75!

Engineering The Future From 1937-2012

The Founding Of A Society

Editor's Note: This is first in a series of articles focusing on MSPE's achievements throughout its 75-year history. The following article contains excerpts from MSPE's 50th Anniversary publication in 1987 and the society's historical files.

It was a stormy, sleet-filled day when a group of hearty engineers met at 2 p.m. on January

9, 1937 in an open forum to discuss the proposed registration bill for architects and engineers to be introduced to the 1937 state legislature. The forum, held on the Missouri School of Mines campus, was set up to inform architects, engineers and other interested persons of the provisions in the proposed new law and to solicit support for its enactment.

Invitations were sent to

1,700 engineers and architects throughout Missouri. Using early replies and requests for a copy of the proposed bill as an indicators there was great interest statewide. However, the severe sleet storm on the day of the meeting limited attendance to local engineers with less than 10 outside speakers and visitors braving the storm to attend. One such visitor was engineer W.S. Conlon of Washing-

ton, D.C. Mr. Conlon was from the National Society of Professional Engineers (NSPE), where he served as Executive Secretary. Following the initial open forum meeting, Mr. Conlon assisted in setting up the temporary organization of MSPE which was formed with the following temporary officers: Joe

See The Founding Of A Society, Page 2



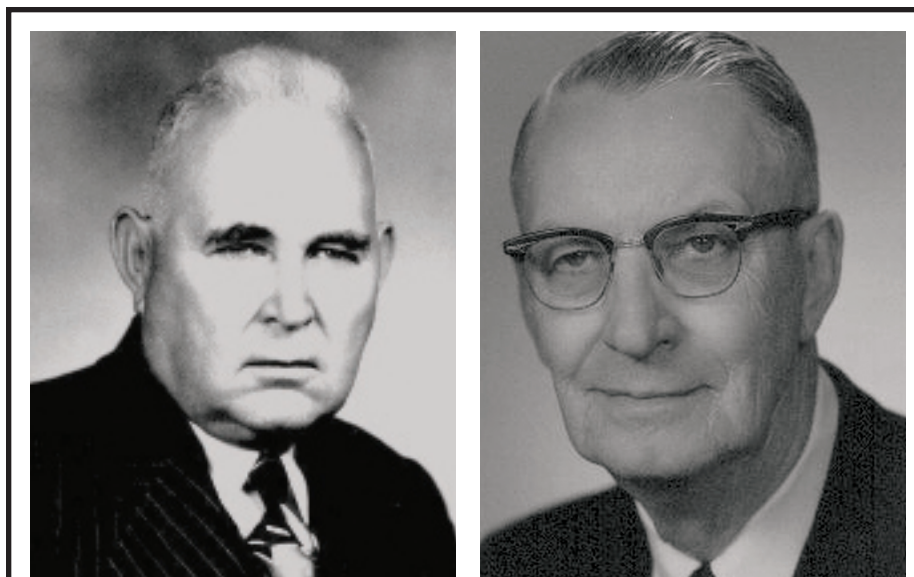
Attendees at MSPE's 8th Annual Fall PDH Days enjoy the interaction the two-day concentrated professional development event provides. In evaluating MSPE's Fall PDH Days, many commented in addition to collecting 15 professional development hours, meeting engineers of multiple disciplines and various experience levels made their attendance worthwhile. Others commented having presentations presented by fellow engineers made MSPE's Fall PDH Days a more valuable experience and provided a good source for sharing ideas and experiences in addition to presenting general technical knowledge in areas that are not directly related to their field of practice. Additional pictures and coverage of MSPE's 8th Annual Fall PDH Days appears on Pages 4 and 5.

The Founding of a Society

(continued from Page 1)

B. Butler, Rolla, President; M.E. Countryman, Jefferson City, Vice President; C.E. Bardsley, Rolla, Secretary-Treasurer, and A.H. Baum, St. Louis, National Director. This newly formed organization was the foundation and starting point of today's MSPE.

At the first called meeting of the society, on February 16, 1937, attendance by the 20 founding members was recorded. In addition to the temporary officers, MSPE's founders included: Ernest W. Carlton, W. E. Davis, E.E. Decker, L.E. Edwards, A.A. Farnham, F. H. Frame, C. L. Gilbreath, Milan Johnson, I.H. Lovett, C.V. Mann, H.W. Meyer, B.H. Rucker, R.S. Rucker, Earl Snell and W. C. Stover. The purpose of this meeting was twofold: first to inspect copies of registration laws already enacted by other states and, secondly, to discuss and formulate desirable policies for the new organization based upon responses received from secretaries of each member state society of NSPE which had all provided samples of their constitution, bylaws and operating procedures. It was at this meeting where founding member Ernest W. Carlton of Rolla, who became MSPE's second president in 1938, insisted that the Missouri Society operate on the same privilege of optional national society membership provisions just like four or five of the state societies near Missouri - despite literature furnished by NSPE implying mandatory national



MSPE Founders and Presidents Joe B. Butler (left), in 1937, and Ernest W. "Skip" Carlton, 1938 and 1939, were responsible for laying much of the groundwork for MSPE's structure and purpose

membership for all state society members. By the time of the first permanent organization meeting, on July 10, 1937, there were 250 state members of which approximately 60 were also enrolled as national members.

Another item of divergence between MSPE and the national society came up at the state society's June 29, 1937 meeting. NSPE's ideal was that only registered engineers be eligible for membership in the state society. But MSPE's founders had other ideas. So that it might be in a position to enroll all qualified engineers in Missouri, the following provision was presented and adopted (quoting from Article III, Section 3): "Upon adoption of adequate registration laws by the State

of Missouri, an applicant must meet the requirements of said laws and such other requirements as may be deemed desirable by the Board of Director of the Society." While this provision set up membership requirements equal of the minimum of registration requirements, it did not require the applicant to be a registered engineer. Throughout MSPE's history, the concerns of the society's founders on these two provisions - optional NSPE membership and membership of non-PE's - have been reconsidered in depth by the Board of Directors periodically.

MSPE's incorporation was complete on September 9, 1937 when the organizing papers were received from the Secretary of State. The occasion was captured in the September 1937 edition of the newsletter (now titled The Missouri Engineer) which stated, "This means we are finally and definitely an organized body. The incorporation papers also mean that the purposes of this Society are permanently recorded in the annals of the State. It should be our aim to see that the spirit embodied in the recorded purposes shall carry on to completion of the work set out to be done."

The founding purpose of MSPE, much as it is today, was for the "advancement of the profession of engineering in its several branches, the professional improvement of its members, the promotion of the professional welfare of its members, the encouragement of social relations among engineers of the State of Missouri, and the sponsoring of proper and adequate legislation for the protection of engineers and of the public against irresponsible and unethical practices."

Throughout 2012, as we celebrate the 75th anniversary of the founding of MSPE, we will reflect on the founding and early years of MSPE; the growth of the organization including legislation that the society helped enact; the start of the Educational Foundation and the establishment of a permanent headquarters building location in Jefferson City; and also the society's commitment to tomorrow as we look toward to Engineering The Future for our next 75 years.

The Missouri Engineer

Publisher: Bruce A. Wylie

Editor: Cherie L. Bishop

Publications Committee Chair: Brandon Parrish, P.E.

The Missouri Engineer, (ISSN 0026-6558) is published semi-monthly with an annual Directory issue in the winter by the Missouri Society of Professional Engineers, 200 E. McCarty St., Suite 200, Jefferson City, MO 65101 for \$1 per year to MSPE members and \$12 per year to non-members. Periodical Postage Paid at Jefferson City, MO and at additional mailing offices.

POSTMASTER:
Send address changes to:
The Missouri Engineer
200 E. McCarty Street, Suite 200
Jefferson City, MO 65101.

Opinions expressed by authors herein are not necessarily those of the Society. As a matter of policy, MSPE does not endorse any item, product or advertisement. Correspondence regarding advertising, articles and changes of address should be mailed to:

The Missouri Engineer
200 E. McCarty Street, Suite 200
Jefferson City, MO 65101
Phone: 573-636-6949
FAX: 573-636-5475
www.mspe.org



MSPE's William P. Clarke, P.E., accepts a service award for his many years of dedication, service and leadership to the National Society of Professional Engineers' Professional Engineers in Private Practice division at the 2011 NSPE Annual Meeting in Las Vegas from 2010-2011 NSPE-PEPP Chair Mark Davy, P.E.

Board of Directors' Winter Meeting Is January 21

On Saturday, January 21, 2012, the Winter Meeting of the Board of Directors for both MSPE and the MSPE Educational Foundation will be held from 10 a.m. to 2 p.m. at the Missouri Society of Professional Engineers' offices in Jefferson City.

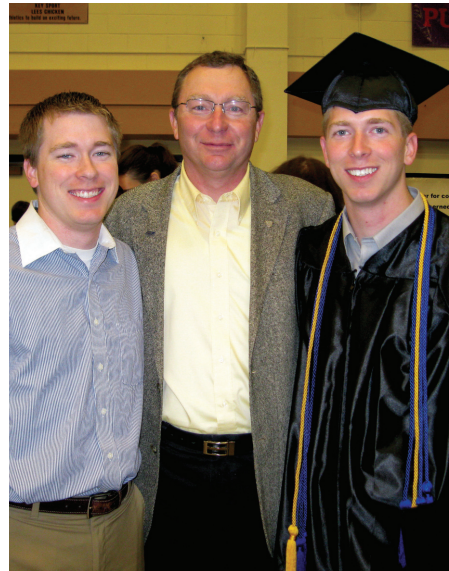
Any member may attend the meeting, however, only directors may vote on issues. The cost for the meeting is \$15 which includes lunch.

For MSPE, the board will discuss potential legislative priorities, approve year-to-date financial statements, elect the Nominating and Tellers Committee, approve NSPE Fellow Nominations from the society, grant life and retired membership status for those meeting special criteria, as well as

review committee, practice division and chapter reports.

Acting on behalf of the Educational Foundation, the Board will review committee reports in addition to discussing status reports on the building leases and the Foundation's financial reports.

MSPE's Executive Committee will convene on Friday, January 20, 2011 to prepare for the Board of Directors meeting. They will review the Board of Directors agenda, study the fiscal year budget projections for the society and foundation, discuss membership status reports, possible legislative action and activity reports from the MSPE staff plus chapters, committees and practice divisions.



An Engineer Trifecta

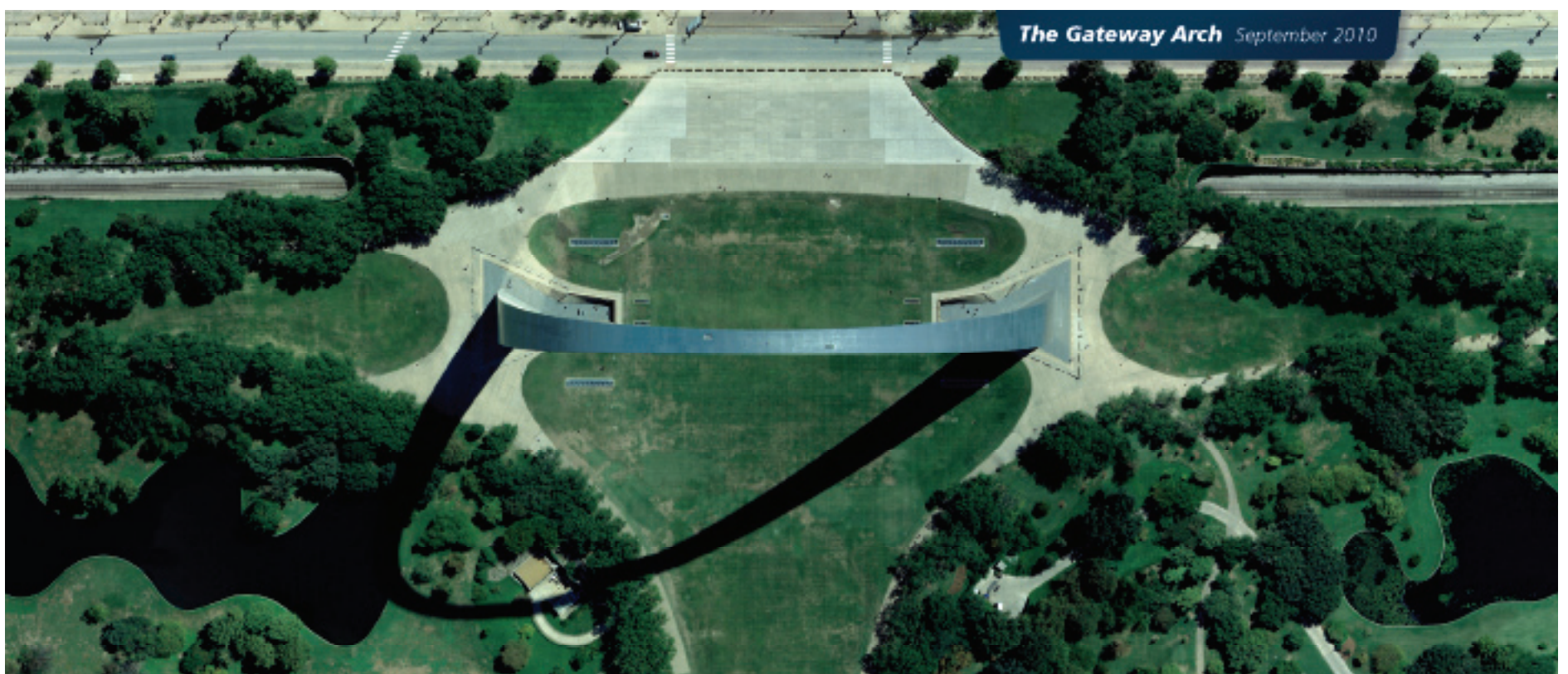
At left, Board of Director Representative to the Executive Committee Gary Strack, P.E. (center) is pictured with his sons, Eric (left) and Timothy (right) following Tim's graduation ceremony from Missouri University of Science & Technology in December 2011.

All three of the Strack men are engineers and members of MSPE - Eric is an EI and Civil Engineer at HNTB in Kansas City, MO; Gary is a civil engineer and Associate - Director, Structural Engineering at Shafer, Kline and Warren, Inc. of Lenexa, KS; and Tim, an EI, is a Ceramic Engineer for Watlow in Richmond, IL.

In Memoriam

MSPE was notified of the passing of the following member:

Neil Adams, P.E. joined MSPE in November 1968. He was affiliated with the Ozark Chapter.



AERIAL IMAGERY LIDAR MAPPING GIS

Experience matters.

Since 1956, MJ Harden has been providing geospatial services to engineering firms, government agencies, pipeline companies and utilities. With over 20,000 projects completed, we are known in the industry for quality, performance and reliability.

Visit us at www.mjharden.com

MJHarden[™]
A GeoEye Company

Snow Doesn't Slow Fall PDH Days' Record Attendance

Even Missouri's first snowfall didn't deter attendees and organizers of MSPE's 8th Annual Fall PDH Days from going ahead as scheduled on December 6 and 7, 2011 at the Capitol Plaza Hotel in Jefferson City. However, hazardous driving conditions on Tuesday, December 6 did require the planning committee to quickly make some quick programming adjustments in the first day's schedule of events to allow for late arrival by both speakers and participants.

A total of 61 attendees - the most ever - attended the professional development event, which for the past eight years has provided an opportunity for professional engineers to receive up to 15 PDHs - the equivalent of one-year's worth of the continuing competency hours needed to meet Missouri's P.E. licensure renewal requirements.

Members at the 2011 event commented Fall PDH Days provides a good value

Mark your calendar now to attend the 9th Annual Fall PDH Days on Tuesday and Wednesday, December 4 and 5, 2012 at the Capitol Plaza Hotel in Jefferson City.

for their investment with programs that address current issues in the engineering profession and the added benefit of networking with their peers.

Rodd Staker, P.E., who has attended at least five of eight annual PDH events, commented in an after-event email, "I highly value these PDH days. In two days each year, the benefits to me are: I always learn something and find the sessions intellectually stimulating; I see some engineering friends and meet some new ones; and I get my PD hours. On top of that the cost is reasonable ..."

This year's sessions focused on: STEM

Education via the Missouri After School Network programming, Ethics, the May 2011 Joplin Tornado Response by Missouri Task Force One and The Empire District Electric Company's Power Recovery, Solar Energy, Missouri's Earthquake Preparedness; and the Proposed Prison Redevelopment Economic Development Project in Jefferson City, all held on the first day. The final day's programs encompassed: Low Cost Traffic Safety Improvements; Alternative Energy & Sustainability through the Nobel Hill Landfill Gas to Energy Project in Springfield, Missouri; the 2011 Flooding Issues; The New 1-70 Mississippi River Bridge

- Design and Construction and Framing a Modern Masterpiece: The City+The Arch+The River 2015 Project.

Attendees included:

William R. Allen, P.E.
Robert M. "Mike" Bates, P.E.
Mark V. Beggs, P.E.
Michael Benson, P.E.
Steven D. Bodenhamer, P.E.
James D. Burtin, P.E.
Virgil E. Carr, P.E.
Michael R. Cheek, P.E.
Albert Cowan, P.E.
Joseph E. Cowen, P.E.
Gregg R. Crane, P.E.
Christopher Criswell, P.E.
Sandra Cupp, P.E.
Michael Davis, P.E.
Tom DeVincentis, P.E.
Diana T. Dohmen, P.E.
Frank J. Dolan, P.E.
Gary E. Dorr, P.E.
Brad Dunagan, P.E.
Jason W. Gruender, P.E.
Jason Haynam, P.E.
David Hertzberg, P.E.
Brian H. Hutsel, P.E.
Stanley M. Irsik, P.E.
Richard Kahl, P.E.
Brandon Keith, P.E.
Timothy J. Kinealy, P.E.
Karl G. Kinler, P.E.
Matthew A. Kriete, P.E.
David H. Kuhn, P.E.
Greg Leary, P.E.
Andrew Lindberg, P.E.
Fred Luetkemeier, P.E.
Dewayne Mabry, P.E.
Kent Mace, P.E.
Stephen J. Malyszko, P.E.
Roy Mattes, Jr., P.E.
Daniel J. Maxwell, P.E.
Jerry W. McDonald, P.E.
Edward J. Mulcahy, P.E.
Richard A. Muldoon, P.E.
Brian Norvell, P.E.
Dean I. Parker, P.E.
Wallace Payne, P.E.
Charles S. Petzel, P.E.
David Pfeiffer, P.E.
Vaughn X. Prost
Allen Pollock, P.E.
David G. Reed, P.E.
Robert R. Smart, P.E.
Kraig Spence, P.E.
Rodd D. Staker, P.E.
Fred Steurer, P.E.
Gary D. Strack, P.E.
Carroll T. "Ted" Turney, P.E.
Ronald R. Urtton, Jr., P.E.
Russell Vinson, P.E.
Glen Walker, P.E.
Chris D. Wilson, P.E.
J. Bruce Woody, P.E.
David Zimmerman, P.E.

Legislative Session Starts Slowly

Toll Roads, Callaway, MoAPELSLA Tops MSPE Concerns

Missouri's 96th General Assembly is underway, but only time will tell if any major issues pass. Hold-ups to progress might be attributed to election year politics, an unusually slow pre-filing of bills, and the already demonstrated inability of the Republican-controlled House and Senate to cooperate.

Additionally, the state faces an estimated \$500 to \$600 million shortfall in the FY 2013 budget largely due to federal stimulus funds that will no longer be available and no immediate hope for new revenue sources. President Pro Tem Rob Mayer (R-Dexter) urged the Senate to pass a balanced budget without any new taxes levied on Missourians. Mayer was critical of the budget Governor Jay Nixon sent to the legislature last year saying it was based on the presumption that tax credit reform legislation would pass and Senate Budget Chairman Kurt Schaefer (R-Columbia) called on the governor to send them a "real" budget and not one predicated on passage of "phantom legislation".

To top it off, Missouri still doesn't have final maps for House, Senate and Congressional districts. The Missouri Supreme Court must hear arguments soon on lawsuits challenging proposed districts because 2012 General Election filing starts in late February.

Anticipated legislation that would be an MSPE priority includes: toll road legis-

lation to rebuild I-70; Callaway II nuclear plant enabling legislation, and registration law changes that would allow the licensing board to fill their own chairman's position from appointees already serving. Peer review legislation that passed surprisingly handily last session - only to be vetoed by Governor Nixon

- will be re-introduced using changes suggested by the Governor's staff.

MSPE members will be kept up to date on general assembly developments through the society's Weekly Legislative News emails, Special Legislative Alerts and bill tracking reports in *The Missouri Engineer*.

96th General Assembly Important Dates

March 2012

- 1 - Last day to introduce Senate bills
- 8 - Spring Break begins upon adjournment
- 8 - Last day to report Senate Consent Bills from Committees
- 19 - Spring Break ends

April 2012

- 9 - Easter Break — NO SESSION
- 10 - Easter Break ends
- 12 - Last day to report House Consent Bills from Committees

May 2012

- 11 - Appropriation Bills must be Truly Agreed and Finally Passed
- 18 - SESSION ENDS at 6:00 p.m.

September 2012

- 12 - Veto Session



Brent Baker, P.E., Director of Customer Service for Empire District Electric Company in Joplin and a Southwest Chapter member, answers questions about the engineering, supplies and workforce needed to restore power to customers following the May 2011 tornado that crippled the town and its available resources.

MSPE 8th Annual Fall PDH Days



Peter Clogston, P.E., Major Project Manager for the FHWA Missouri Division Office, discusses the design and construction of the new I-70 Mississippi River Bridge project in St. Louis.



Stan Irsik, P.E. (above) takes notes while listening to various speakers including Vaughn Prost, P.E. (top left) discussing Solar Engineering Applications and Kansas City Corps of Engineers' Water Management Section Chief Eric Shumate, P.E. (bottom left) reflect on Missouri's 2011 flooding.



Attendees at MSPE's Fall PDH Days pay close attention and take notes (above, left) while speaker David Weber, P.E., (above, right) structural engineer on the Missouri Task Force One Urban Search and Rescue Team, describes the rescue-recovery efforts in the aftermath of the F5 tornado that devastated Joplin in May 2011.

MSPE Educational Foundation Appeal

Your Donations Help

Donations to the MSPE Educational Foundation are an investment in the future of engineering by helping:

- Encourage students to choose the field of engineering*
- Promote P.E. Licensure to engineering school faculty*
- Maintain high standards for licensing Professional Engineers*
- Improve the public image of Professional Engineers*
- Provide scholarships for engineering students*

Gifts to the MSPE Educational Foundation may be made in the form of a monetary contribution, a stock donation, or an estate or insurance bequest. Stock transfer enables you to donate at the current value of the stock, claiming a higher deduction than if you donated stock proceeds, while saving on fees and capital gains taxes.

Monetary gifts can be selected to support the state MATHCOUNTS competition, reduce the building mortgage, or be applied to the endowment fund - the backbone of the Educational Foundation - where the original donation is invested and only the interest, dividends and capital gains are expended to support foundation activities including the Cohen Scholarship awarded to a college student majoring in engineering.

To make a donation, you can complete the contribution form included with this request and mail your check to MSPE, or include your gift as a voluntary contribution on your 2012 dues statement from MSPE.

Thank you for your consideration.

Contributions Received

G.J. Fennewald, P.E.
James Guthrie, P.E.
J. Michael Horner, P.E.
David Sager, P.E.
Dan F Stokes, P.E.

Endowment - Scholarship

Jerry H. Campbell, P.E.
Dale Dressel, P.E.
G.J. Fennewald, P.E.
James Guthrie, P.E.
Forrest Lowe, P.E.
Dan Raterman, P.E.

MSPE extends its appreciation to the following members who provided generous gifts to the Educational Foundation through December 31, 2011:

Building Fund

Dale Dressel, P.E.
G.J. Fennewald, P.E.
James Guthrie, P.E.
Dan F Stokes, P.E.

MATHCOUNTS

Jerry H. Campbell, P.E.
Dale Dressel, P.E.

Classified Advertising

PROFESSIONAL ENGINEER OPENING

Registered Professional Engineer 10 years experience in water/wastewater systems. Salary commensurate with experience. Benefits. Send resume, availability AND references to: **MECO Engineering Co., Inc., 2701 Industrial Drive Jefferson City, MO 65109. Email:mecojc@mecoengineering.com.**

AD PLACEMENT

To place a classified ad in The Missouri Engineer, please email ad copy, special instructions and billing information to Cherie L. Bishop, Editor, at cheriebishop@mspe.org or call 573-636-6949.

Classified ads are charged by the word - up to 40 words is \$25; each additional 20 words or less is \$15.

For more information on advertising, visit our web site at www.mpse.org

MSPE Educational Foundation Contribution Form

Donor Name: _____

Address: _____

City: _____

State: _____ **Zip Code:** _____

Daytime Phone Number: _____

Gifts to the MSPE Educational Foundation are tax-deductible as allowed by law.

Contribution Category

- Endowment Fund/Scholarship
 MATHCOUNTS Building Debt Reduction

Monetary Contribution Amount

- \$250.00 \$100.00 \$75.00
 \$50.00 Other amount: _____

Stock contribution

(MSPE Staff will call with details for electronic transfer)

Name of common stock: _____

Number of shares: _____

**Return this form with your contribution to:
MSPE Educational Foundation
200 E. McCarty, Suite 200
Jefferson City, Missouri 65101**



President Britt Smith, P.E. and Executive Director Bruce A. Wylie visited MSPE's Northeast Chapter during their December 2011 meeting. The two discussed potential legislative topics for the 2012 session and membership recruitment challenges at the meeting. Afterwards, President Smith (left) posed for pictures with Paula Gough, P.E., (center) MoDOT Northeast District Engineer and the guest speaker for the meeting and Northeast Chapter President Jerad Noland, P.E. (at right).

Professional Card Listings

 <p>ANDERSON ENGINEERING, INC. ENGINEERS-SURVEYORS-LABORATORIES-DRILLING EMPLOYEE OWNED - SERVING THE AREA SINCE 1984 - LICENSED IN 20 STATES</p> <p>2045 W Woodland Springfield, MO 65807 417-866-2741 aen@andinc.com</p> <p>611 E Third Street Joplin, MO 64801 417-782-7399 www.andinc.com</p>	<p>International reach. Local presence.</p>  <p>Call Jim Robison or Cam Pondgrass in Springfield, 417-831-5700, or visit www.geoengineers.com</p> <p>From 12 offices nationwide, GeoEngineers crafts geotechnical, geological, environmental and trenchless solutions for clients worldwide.</p>	 <p>Civil Transportation MEP Surveying</p> <p>Kulshammer Group, Inc. St. Louis, MO Belleville, IL 314.434.8888 kdginc.com</p>	 <p>Forming Partnerships Delivering Results.</p> <p>SHAFFER, KLINE & WARREN, INC. www.skw-inc.com</p>
 <p>BLACK & VEATCH Building a world of difference</p> <p>www.bv.com Consulting • Engineering • Construction • Operation</p>	<p>GREDELL Engineering Resources, Inc. ENVIRONMENTAL ENGINEERING LAND-AIR-WATER Jefferson City, Rolla, Springfield, and St. Louis, Missouri</p> <p>2001 to 2010 - TEN YEARS STRONG! Engineering Design, Geologic Studies and Regulatory Compliance</p> <p>Telephone (Toll Free): (888) 822-0727 e-mail: Contact@gredeell-inc.biz Visit Our Website: www.gre-inc.biz</p>	 <p>• Geotechnical Services • Environmental Services • Material Testing Services</p> <p>PALMERTON & PARRISH, INC.</p> <p>Springfield, MO 417-864-6000 Branson, MO 417-861-8395 Joplin, MO 417-824-2008 www.ppmo.com</p>	 <p>For more information call (314) 699-9660 or visit www.shannonwilson.com</p> <p>Excellence. Innovation. Service. Value. Since 1954</p>
 <p>Kansas City, Missouri St. Louis, Missouri</p> <p>Offices Worldwide www.burnsmcd.com</p>	 <p>cooperating corporation environmental engineering inc.</p> <p>12300 Brentwood Blvd. Suite 100 Columbia, MO 65207</p>	 <p>Senior A. Schatz, P.E., P.L.S. Member Professional Engineer</p> <p>Transforming your ideas into reality</p>	 <p>David L. Smith, P.E. President Herman E. Gorth, P.E. Vice President</p> <p>2093 S. Jefferson Ave. Springfield, MO 65807 Phone: 417-893-2200 Fax: 417-892-1189 www.southgorth.com</p>
<p>PROVIDING COMPLETE ENGINEERING SERVICES FOR OVER 60 YEARS</p>  <p>Cook, Flatt & Strobel ENGINEERS, P.A.</p> <p>PROFESSIONAL SERVICES:</p> <ul style="list-style-type: none"> • HIGHWAY ENGINEERING • TRAFFIC ENGINEERING • AIRPORT ENGINEERING • BRIDGE DESIGN • ENVIRONMENTAL SERVICES • CONSTRUCTION ENGINEERING • SURVEYING <p>5029 Ward Parkway, Suite 110 Kansas City, MO 64114 816-333-4477</p> <p>Other Offices: Tapeksa, KS • Wichita, KS www.cfsa.com</p>	 <p>Laboratory Planning Solutions</p> <p>Ronald E. Hill, P. E. President</p> <p>HEMCO Corporation Phone: (816) 796-2900 711 S. Powell Road Email: info@hemcocorp.com Independence, MO 64086 FAX: (816) 796-3333 Visit: www.HEMCO Corporation.com</p>	<p>SEGA INC. Engineering & Technical Services</p>  <p>Sega Inc. specializes in the power industry and has employees with experience in: Civil, Controls, Electrical, Mechanical, Structural</p> <p>913.681.2881 • www.segaInc.com</p>	<p>Resourceful. Responsive. Reliable</p>  <p>Five Offices Serving Missouri tetracon.com</p> <p>Consulting • Estimating • Construction Management • Facilities</p>
 <p>creating remarkable solutions for a higher quality of life</p> <p>St. Louis • D'Folien • Kansas City @ gbateam.com 314.231.0100 - 3L 636.240.2444 - OF 816.421.1300 - KC</p>	 <p>HORNER & SHIFRIN, INC. ENGINEERS www.HornerShifrin.com Engineering Design Excellence Since 1933</p>	<p>Tran Systems</p> <p>EXPERIENCE Transportation</p> <p>Architecture, Engineering, & Planning Management & Supply Chain Consulting Real Estate Consulting Transportation Security Consulting</p> <p>Kansas City 816-329-9600 St. Louis 314-967-2489 www.transystems.com</p>	<p>Washington University in St. Louis SCHOOL OF ENGINEERING & APPLIED SCIENCE</p> <p>Part-Time Classes. Full-Time Results. >> sever.wustl.edu</p>

Welcome New Members

Central Chapter

Russell Vinson, P.E.
Malicoat-Winslow Engineers,
5649 N. Clearview Road
Columbia, MO 65202

Jefferson City Chapter

Derick Miles, P.E.
MO Public Service Commission
200 Madison St., Ste. 220
Jefferson City, MO 65101

Ozark Chapter

Kirk Juranas, P.E.
City of Springfield Public Works
PO Box 8368
Springfield, MO 65801
Matthew Miller, P.E.
Great River Associates
2826 S. Ingram Mill
Springfield, MO 65804
Ron Rinke, P.E.
Tuthill
4840 W. Kearney St.
Springfield, MO 65803
Students
Daniel Hill
Hanna McLemore

St. Louis Chapter

Rajesh Arumugam, P.E.
Schweitzer Engineering Laboratories
340 Office Ct., Ste. D
Fairview Heights, IL 62208
Barry Freiner, P.E.
Rogers-Schmidt Engineering
10733 Sunset Office Dr., #280
St. Louis, MO 63127
Brian Hutsell, P.E.
Crawford, Murphy & Tilly, Inc.
One Memorial Drive, Suite 500
St. Louis, MO 63102
Dr. Life Kaanagbara
619 N. Bompert Avenue
St. Louis, MO 63119
Jeremiah King, P.E.
Brinkmann Constructors
972 Motherhead Rd., Suite 100
Saint Charles, MO 63005
Brian Malin, P.E.
4 Fawnwood Drive
St. Louis, MO 63128
Ryan Stecher, P.E.
Heideman Associates, Inc.
13545 Barrett Parkway Dr., #200
St. Louis, MO 63021

Gary Vajda, P.E.

Environ International Corp.
13723 Riverport Dr., Ste. 201
Maryland Heights, MO 63043
Kevin Williams, P.E.
McCarthy Building Company
1341 North Rock Hill Rd
St. Louis, MO 63124
Student
Andrew Wooten

Southeast

William Cobb, P.E.
S H Smith & Co.
901 Vine St.
Poplar Bluff, MO 63901

Western

Kyle Marlay, E.I.
Shafer, Kline & Warren Inc.
11250 Corporate Avenue
Lexena, KS 66219
Student
Barrett Schmidt



The Missouri Engineer
200 E. McCarty Street, Suite 200
Jefferson City, Missouri 65101

Sustaining Organizations

A2V Partners, LLC

Springfield, MO

ABNA Engineering

St. Louis, MO

Allgeier, Martin

Joplin, MO

Allstate Consultants

Columbia, MO

Ameren Services

St. Louis, MO

American Concrete

Overland Park, KS

Anderson Engineering

Springfield, MO

ARIS Engineering

Ozark, MO

Barton Engineering

Lebanon, MO

Black & Veatch

Kansas City & St. Louis, MO

Burns & McDonnell

Kansas City & St. Louis, MO

CEPCO, LLC

Ozark, MO

Cook, Flatt &

Strobel, Engineers

Topeka, KS

EDSI

Chesterfield, MO

Fred Weber, Inc.

Maryland Heights, MO

George Butler

Lenexa, KS

Gibbens Drake Scott

Raytown, MO

GREDELL Engineering

Jefferson City, MO

M.J. Harden Associates

Kansas City, MO

HNTB Corporation

Kansas City, MO

Holmes Murphy

Overland Park, KS

Horner & Shifrin, Inc.

St. Louis, MO

Kuhlmann design

Group

St. Louis, MO

Lockton Companies

Kansas City, MO

Missouri University of

Science and Technology

Rolla, MO

Palmerton & Parrish

Springfield, MO

Payne & Brockway, P.A.

Olathe, KS

Scurlock Industries

Springfield, MO

Shafer, Kline & Warren

Overland Park

Sprenkle & Associates

Monett, MO

Strickland Engineering

Jackson, MO

TranSystems

Kansas City, MO

UMKC School of

Computing &

Engineering

Kansas City, MO

University of Missouri

College of Engineering

Columbia, MO

Walter P. Moore

& Associates

Kansas City, MO

Life Members Make Voluntary Dues Donations

Listed below are the society's life members who offered their support to MSPE by making a voluntary dues donation from November 1 through December 31, 2011. A grateful society extends its support to these faithful supporters:

Jack Beirne, P.E., Creve Coeur, MO

Charles Buescher, P.E., Chesterfield, MO

T. Michael Garrison, P.E., Leawood, KS

Paul Hickman, P.E., Springfield, MO

Gerald Hitt, P.E., Jackson, MO

James Hummert, P.E., Florissant, MO

Roland Meyer, P.E., Florissant, MO

James E. Moulder, P.E., Columbia, MO

James Odom, P.E., Hallsville, MO

Joseph Reichert, P.E., Kansas City, MO

William Reinhardt, Jr., Oakdale, MN

Henry Schwartz, Jr., P.E., St. Louis, MO

Benjamin Stables, P.E., Laguna Woods, CA

Claude (Norman) Strauser, P.E., Sullivan, MO

George Tomazi, P.E., Florissant, MO

Robert Whitehead, P.E., Columbia, MO